

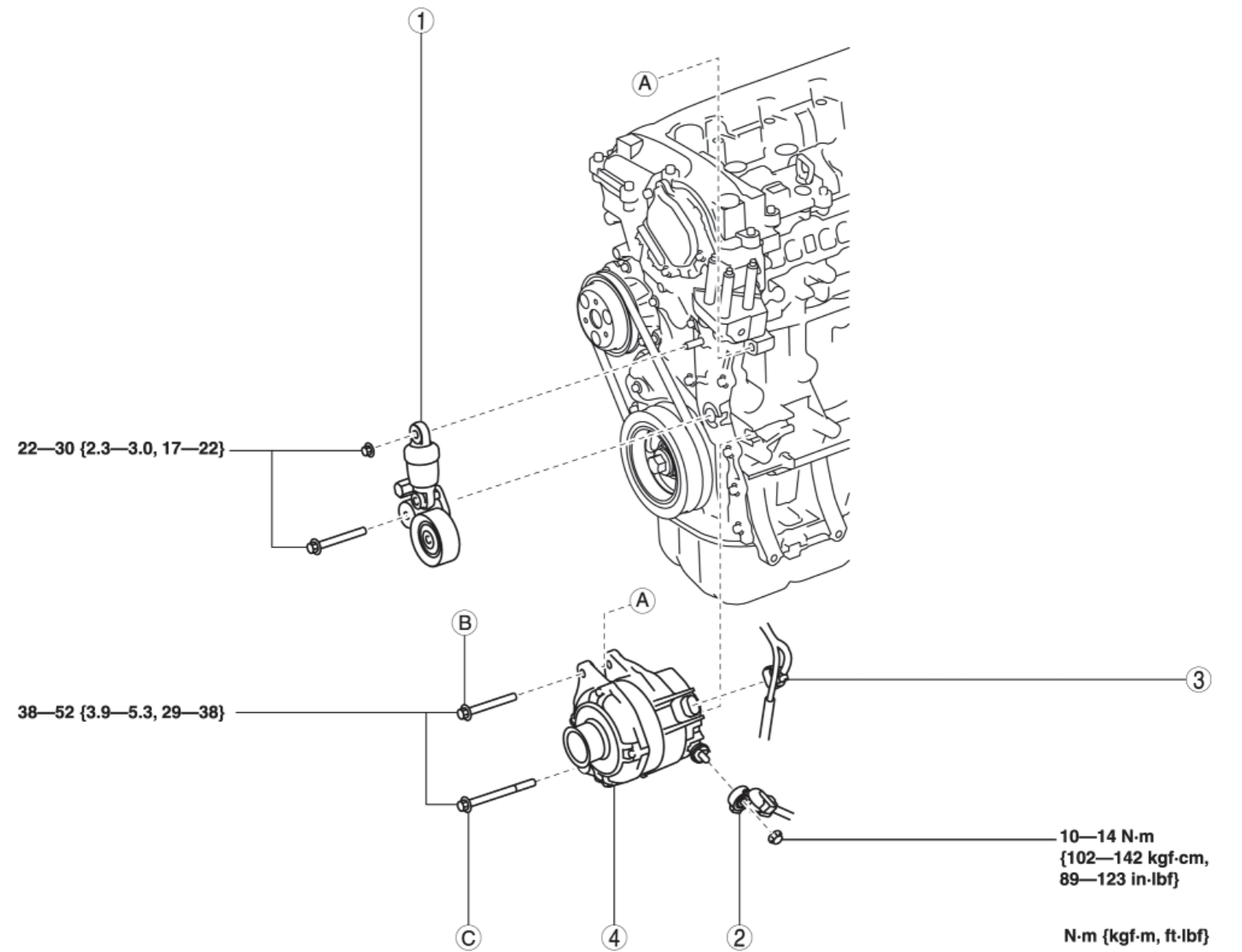
[< Previous](#) [Next >](#)

2013 - CX-5 - Engine

GENERATOR REMOVAL/INSTALLATION [SKYACTIV-G 2.0]

WARNING:

- Remove and install all parts when the engine is cold, otherwise they can cause severe burns or serious injury.
 - When the battery cables are connected, touching the vehicle body with generator terminal B will generate sparks. This can cause personal injury, fire, and damage to the electrical components. Always disconnect the negative battery cable before performing the following operation.
1. Disconnect the negative battery cable. (See **NEGATIVE BATTERY CABLE DISCONNECTION/CONNECTION [SKYACTIV-G 2.0].**)
 2. Remove the front under cover No.2. (See **FRONT UNDER COVER No.2 REMOVAL/INSTALLATION.**)
 3. Remove the generator drive belt. (See **DRIVE BELT REMOVAL/INSTALLATION [SKYACTIV-G 2.0].**)
 4. Remove the A/C compressor with the cooler hose still connected and secure it using wire or rope so that it is out of the way. (See **A/C COMPRESSOR REMOVAL/INSTALLATION.**)
 5. Remove in the order indicated in the table.
 6. Install in the reverse order of removal.



1	Drive belt auto tensioner (See Drive Belt Auto Tensioner Installation Note.)
2	Terminal B cable
3	Generator connector
4	Generator (See Generator Removal Note.) (See Generator Installation Note.)

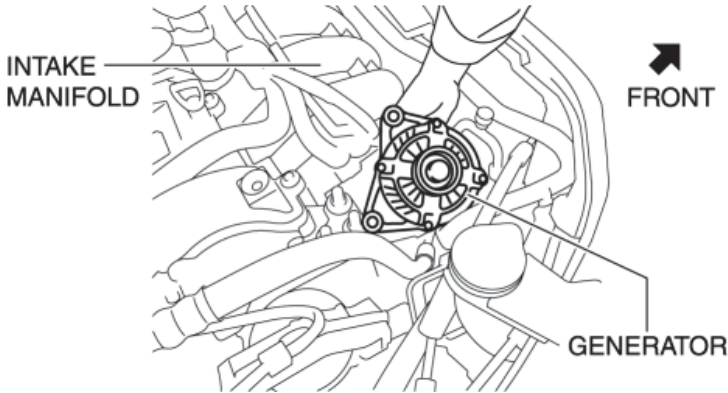
Generator Removal Note

1. Fully loosen the generator lower bolt and pull it outward until it contacts the body frame.

NOTE:

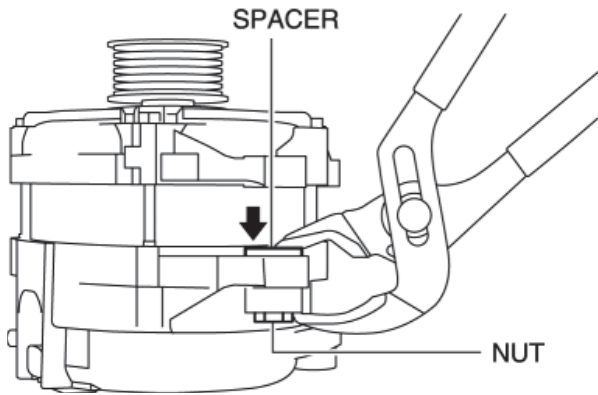
- The generator can be removed without fully removing the lower bolt from the engine.

2. Remove the generator upper bolt.
3. Remove the generator together with the lower bolt from the engine.
4. Remove the generator from above the engine compartment.

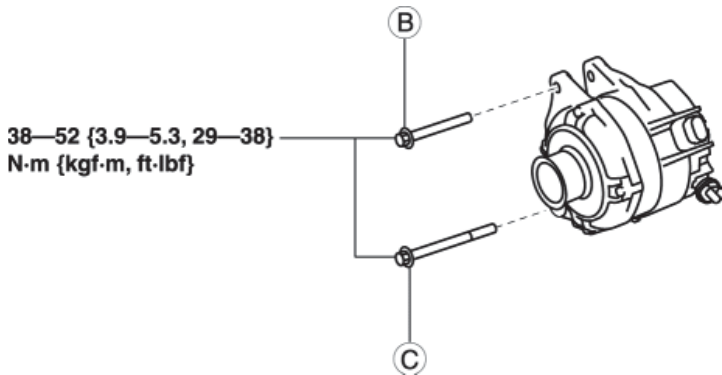


Generator Installation Note

1. To facilitate the installation of the generator to the engine, grasp the spacer in the bolt installation hole using pliers and push it down to the nut side.



2. Temporarily install the generator to the engine with the bolt C.



3. Align the generator fixing hole with the engine side hole, then temporarily tighten the generator installation bolt B.
4. Securely tighten the generator installation bolts in the order of B, C.

Drive Belt Auto Tensioner Installation Note

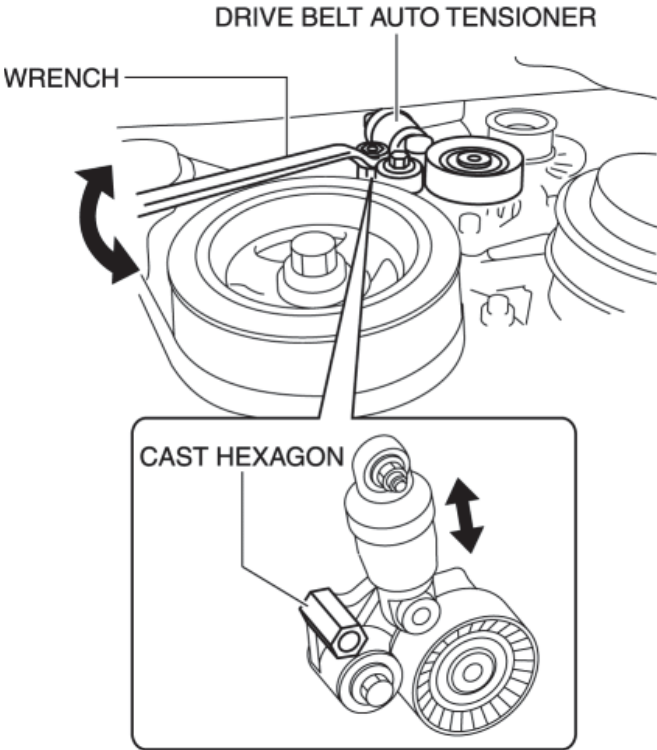
CAUTION:

- To allow the drive belt auto tensioner to function correctly, always bleed the air from the drive belt auto tensioner using the following procedure after assembling the drive belt auto tensioner.

1. Install the drive belt auto tensioner to the engine.

CAUTION:

- To prevent damage to the drive belt auto tensioner, do not apply excessive torque after the tensioner moves full-stroke.
2. Insert the wrench into the cast hexagon on the drive belt auto tensioner, move the drive belt auto tensioner up and down at full-stroke three times to bleed the air.



NOTE:

- By moving the drive belt auto tensioner up and down full-stroke three times, the piston inside the tensioner moves to bleed the air.