

<b>Subject:</b>  MIL ILLUMINATION WITH DTC P0128	<b>Bulletin No:</b> 01-001/06
	<b>Last Issued:</b> 01/11/2006

## BULLETIN NOTE

This bulletin supersedes the previous bulletin 01-008/04, issued on 02/26/04. The REPAIR PROCEDURE, PART(S) and WARRANTY INFORMATION have been revised.

## APPLICABLE MODEL(S)/VINS

2004 – 2005 Mazda3

## DESCRIPTION

Some vehicles may experience the MIL illumination with DTC P0128 (Coolant Thermostat Stuck Open) stored in memory. This condition may be caused by improper PCM calibration.

Customers having this concern should have their vehicle repaired using the following repair procedure.

## REPAIR PROCEDURE

1. Reboot the WDS PTU to clear memory before reprogramming.
2. Using WDS B40.3 or later software, reprogram the PCM to the latest calibration (refer to "Calibration Information" table) by following the "Module Reprogramming" procedure.

### NOTE:

- Always update the WDS PTU first, then install the needed calibration file that WDS shows during PCM reprogramming. Go to "WDS Calibration" on ESI and download the "update" file. If the PTU is not updated to the latest WDS calibration level, the calibration file will not install into the PTU.
- It is not necessary to remove any fuses or relays during PCM reprogramming when the WDS screen prompts you to do so. You may accidentally stop power to one of the PCM terminals and cause the PCM to be blanked, or you may receive error messages during the WDS reprogramming procedure.
- WDS shows the calibration part numbers after programming the PCM.
- Please be aware that PCM calibration part numbers and file names listed in any Service Bulletin may change due to future releases of WDS software, and additional revisions made to those calibrations for service related concerns.
- When reprogramming a PCM, WDS will always display the "latest" calibration P/N available for that vehicle. If any calibration has been revised/updated to contain new information for a new service concern/issue, it will also contain all previously released calibrations.
- **When performing this procedure, if the WDS PTU is not docked and connected to 115V-120V, we recommend that a battery charger be installed on the vehicle battery and turned ON to a maximum charge of no more than 20 AMPS to keep the vehicle battery up to capacity. If you exceed 20 AMPS, it will damage the WDS PTU. Also the external battery power supply cable should be connected to the vehicle battery and the PTU.**

3. After performing the PCM reprogramming procedure, verify the repair by starting the engine and making sure there are no MIL illumination or abnormal warning lights present.

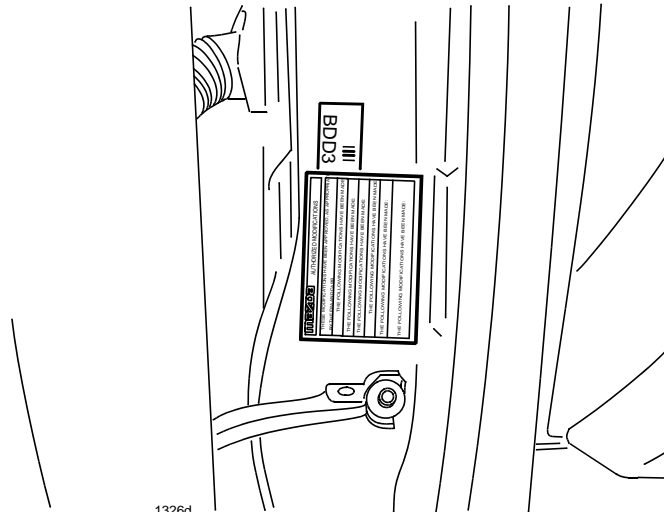
**NOTE:**

- If any DTCs should remain after performing DTC erase, diagnose the DTCs according to the appropriate Troubleshooting section of the Workshop Manual.
  - After PCM reprogramming, it is no longer necessary to road test the vehicle to “relearn” KAM (Keep Alive Memory).
4. For vehicles built prior to February 1, 2004 (VIN: JM1BK \*\*\*\* \* 149352), perform the following additional work:
    - a. Allow vehicle to cool down overnight. Drive vehicle and check if MIL (DTC P0128) comes ON.
      - If the MIL still comes ON with DTC P0128, replace thermostat with a modified part according to Workshop Manual (section 01-12THERMOSTAT REMOVAL/INSTALLATION).
  5. Fill out an “Authorized Modifications” label (P/N 9999-95-AMDC-97) with the new PCM calibration information, your dealer code, and today’s date.

<b>mazda</b> AUTHORIZED MODIFICATIONS
THESE MODIFICATIONS HAVE BEEN APPROVED, AS APPROPRIATE, BY THE EPA AND CARB.
THE FOLLOWING MODIFICATIONS HAVE BEEN MADE:

1326c

6. Place the “Authorized Modifications” label on the “A” pillar below the tear tag in the driver door jamb.



1326d

## CALIBRATION INFORMATION

Engine	Transmission	Spec.	Model Year	New PCM Calibration Part Number	File Name
2.3L	M/T	Fed	2004	L3S2-18-881C	SW-L3S2EC020
		Fed	2005	L3S2-18-881C	SW-L3S2EC020
		Calif	2004	L3S7-18-881C	SW-L3S7EC020
		Calif	2005	L3S7-18-881C	SW-L3S7EC020
	A/T	Fed	2004	L3S3-18-881D	SW-L3S3ED030
		Fed	2005	L3S3-18-881D	SW-L3S3ED030
		Calif	2004	L3S8-18-881D	SW-L3S8ED030
		Calif	2005	L3S8-18-881D	SW-L3S8ED030

Engine	Transmission	Spec.	Model Year	New PCM Calibration Part Number	File Name
2.0L	M/T	Fed	2004	LFG5-18-881C	SW-LFG5EC020
		Fed	2005	LFG5-18-881C	SW-LFG5EC020
		Calif	2004	LFH7-18-881C	SW-LFH7EC000
		Calif	2005	LFH7-18-881C	SW-LFH7EC000
	A/T	Fed	2004	LFG6-18-881D	SW-LFG6ED030
		Fed	2005	LFG6-18-881D	SW-LFG6ED030
		Calif	2004	LFH8-18-881D	SW-LFH8ED000
		Calif	2005	LFH8-18-881D	SW-LFH8ED000

**NOTE:** The PCM Calibration Part Numbers listed above are provided for PCM reprogramming purposes only. These are not necessarily the same Mazda part numbers used to order an actual PCM through the Mazda Parts System. It is not necessary to order a PCM as part of this repair procedure.

## PART(S) INFORMATION

Part Number	Description	Qty.	Note
LF50-15-170C	Thermostat	1	-

## WARRANTY INFORMATION

**NOTE:**

- This warranty information applies only to verified customer complaints on vehicles eligible for warranty repair. Refer to the Warranty Wizard for warranty term information.
- Additional diagnostic time cannot be claimed for this repair.

Warranty Type	A
Symptom Code	6X
Damage Code	9W
Part Number Main Cause	5555-05-026A
Quantity	0
Operation Number / Labor Hours:	XXB224FX / 0.4 Hrs.

**NOTE:** If thermostat is replaced, add normal SRT time in addition to 0.4 hrs.