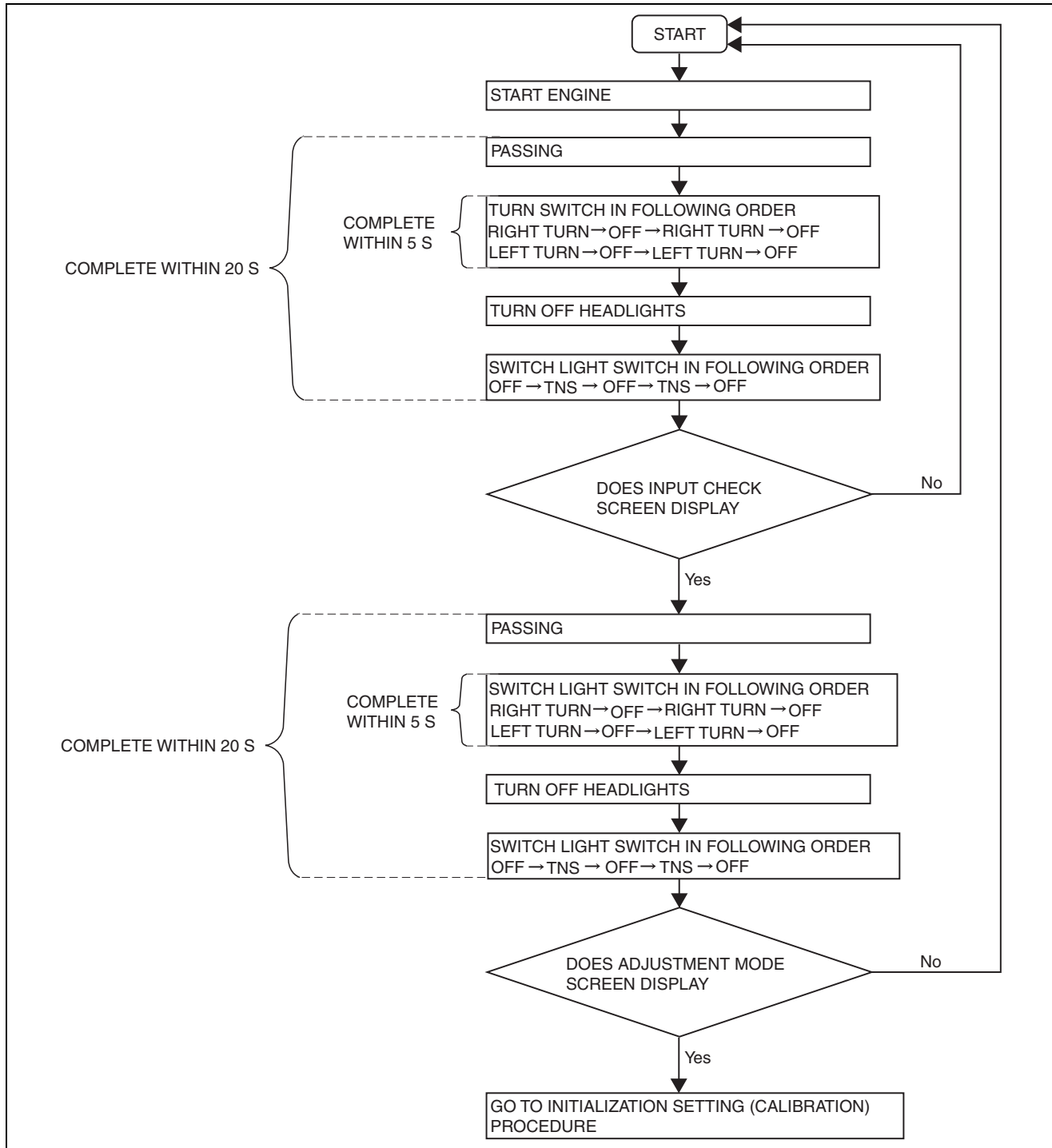


ENTERTAINMENT



2. Start the engine. (Only if initialization setting is not implemented)

Initialization setting (calibration) procedure Procedure

Caution

- If the initialization setting is performed on a sloping surface or if there is cargo loaded which largely changes the vehicle posture, the camera optical axis may not set to the correct position. When performing the initialization setting, park the vehicle on a flat surface and remove any cargo.

1. Launch the initialization setting (calibration) mode. (See 09-20-71 Initialization setting (calibration) mode launching procedure.)