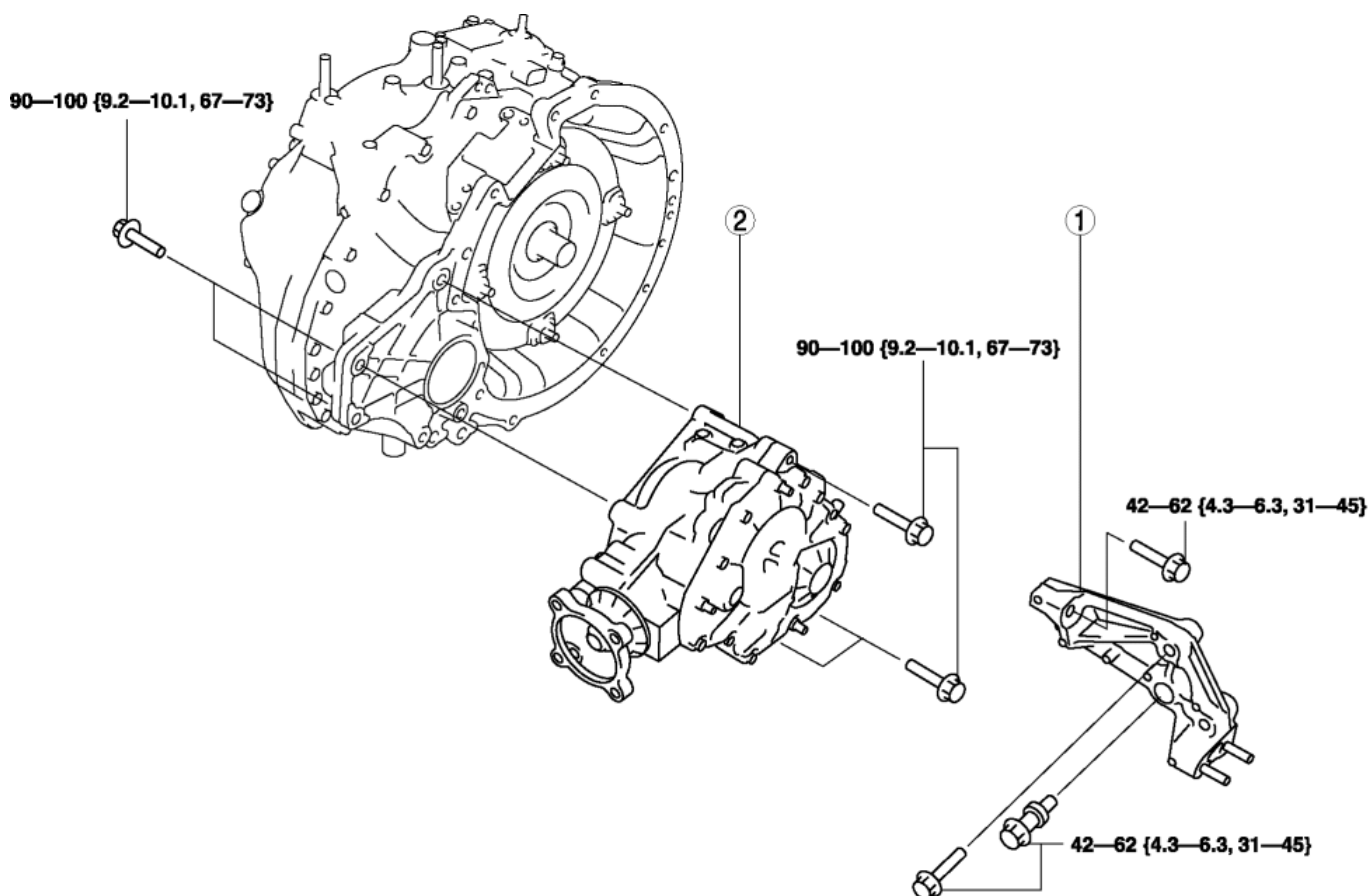


[< Previous](#) [Next >](#)

2012 - CX-9 - DriveLine/Axle

TRANSFER REMOVAL/INSTALLATION

1. Disconnect the negative battery cable.
2. Remove the following parts:
 - a. Middle pipe (See [EXHAUST SYSTEM REMOVAL/INSTALLATION \[MZI-3.7\].](#))
 - b. Front pipe (See [EXHAUST SYSTEM REMOVAL/INSTALLATION \[MZI-3.7\].](#))
 - c. Stabilizer control link (See [FRONT CROSSMEMBER REMOVAL/INSTALLATION.](#))
 - d. Tie-rod end ball joint (RH) (See [FRONT CROSSMEMBER REMOVAL/INSTALLATION.](#))
 - e. Front lower arm ball joint (RH) (See [FRONT CROSSMEMBER REMOVAL/INSTALLATION.](#))
3. Disconnect the drive shaft (RH) from the joint shaft. (See [FRONT DRIVE SHAFT REMOVAL/INSTALLATION.](#))
4. Remove the joint shaft (See [JOINT SHAFT REMOVAL/INSTALLATION \[AWD\].](#))
5. Disconnect the propeller shaft from the transfer side. (See [PROPELLER SHAFT REMOVAL/INSTALLATION.](#))
6. Remove the RH catalytic converter. (See [EXHAUST SYSTEM REMOVAL/INSTALLATION \[MZI-3.7\].](#))
7. Remove in the order indicated in the table.
8. Install in the reverse order of removal.
9. Warm up the engine and transaxle, inspect for oil leakage, and inspect the transfer operation.

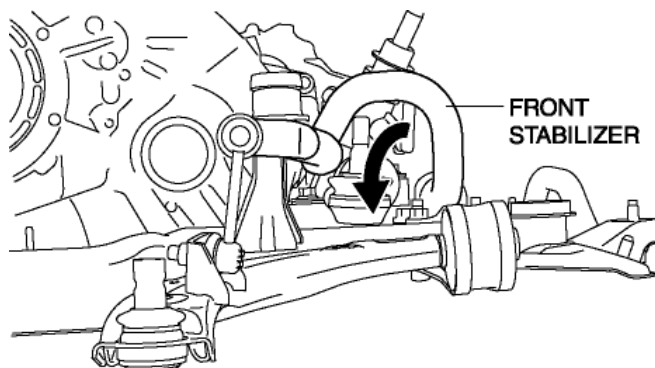


N·m {kgf·m, ft·lbf}

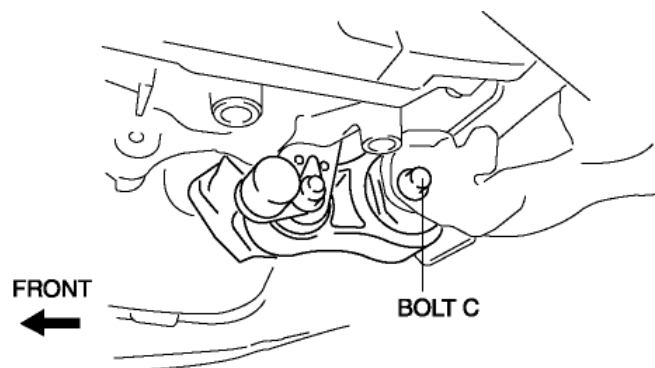
1	Transfer bracket
2	Transfer (See Transfer Removal Note.) (See Transfer Installation Note.)

Transfer Removal Note

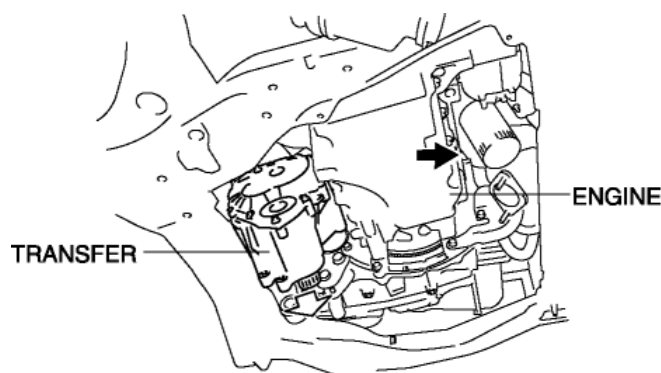
1. Disconnect the front stabilizer control link, and rotate the stabilizer to the front to secure a space from the side.



2. Remove the No.1 engine mount bolt C.

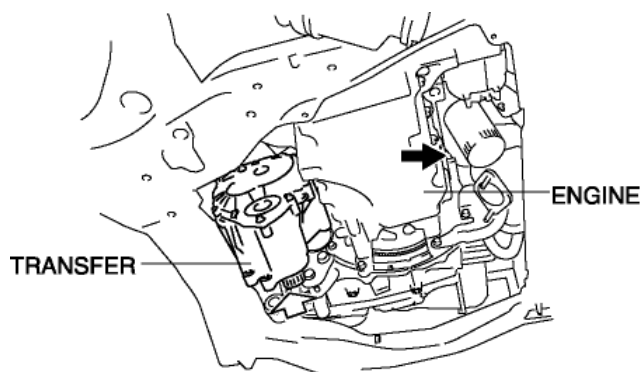


3. Remove the transfer installation bolts.
4. Push the engine forward so that the front side of the transfer faces downward, then remove the transfer.



Transfer Installation Note

1. Push the engine forward so that the front side of the transfer faces downward, then install the transfer.

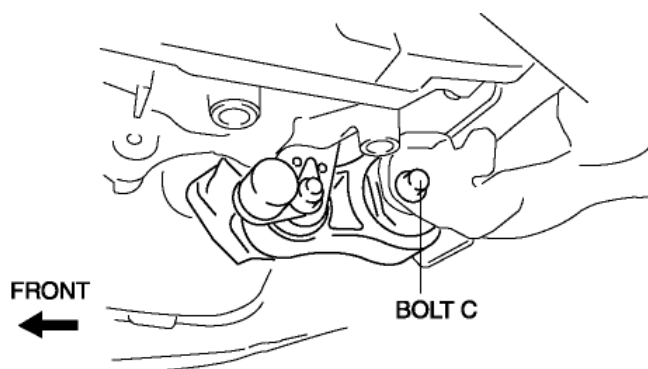


2. Install the transfer installation bolts.

Tightening torque

- 90—100 N·m {9.2—10.1 kgf·m, 67—73 ft·lbf}

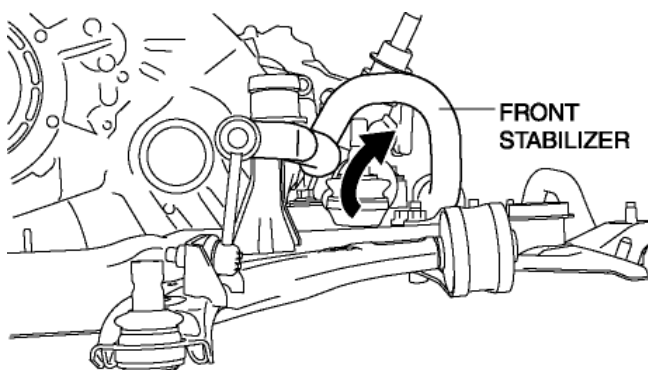
3. Tighten the No.1 engine mount bolt C at the specified torque.



Tightening torque

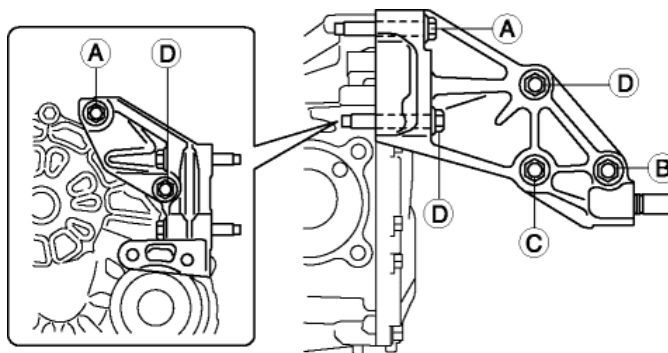
- 105—132 N·m {11—13 kgf·m, 78—97 ft·lbf}

4. Rotate the front stabilizer to the rear to set it in its original position.



Transfer Bracket Installation Note

1. Install the transfer bracket to the transfer, then temporarily tighten bolt C.



2. Temporarily tighten bolt A and B.
3. Tighten bolt A, B and C in the order of C→A→B.

Tightening torque

- Bolt A, B, C: 42—62 N·m {4.3—6.3 kgf·m, 31—45 ft·lbf}

4. Tighten bolt D.

Tightening torque

- Bolt D: 42—62 N·m {4.3—6.3 kgf·m, 31—45 ft·lbf}

[< Previous](#) [Next >](#)

[Back to Top](#)

© 2012 Mazda North American Operations, U.S.A.