

# Service Information

Mazda Motor Corporation

3-1, Shinchi, Fuchu-cho, Aki-gun  
Hiroshima 730-8670, Japan  
TEL : 81(82)287-5323  
FAX : 81(82)287-5220

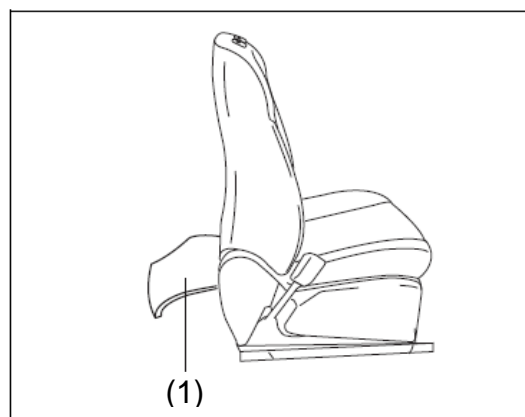


Category <b>S</b>	<b>Repair Guidance</b>	Ref. No. R014/18	Page 1 of 3
Coverage <input type="checkbox"/> Distributor only <input checked="" type="checkbox"/> Please inform your dealers		Date Issued March 6, 2018	
Please convey this information to your <input type="checkbox"/> Director <input checked="" type="checkbox"/> General Manager <input checked="" type="checkbox"/> Warranty Dept. <input checked="" type="checkbox"/> Parts Dept. <input checked="" type="checkbox"/> Training Dept. <input checked="" type="checkbox"/> Field Rep.		Date Revised	
Applicable Model  CX-5 (KF) with manual seats		Applicable Countries and/or Vehicle Specifications  Worldwide	

## Subject: Front Seat Cushion Trim at the bottom back coming off

### DESCRIPTION

Some vehicles may exhibit a condition that the driver and/or passenger seat cushion trim at the bottom back (1) comes off the seat cushion frame.



ac5wzw0000701

### CAUSE

The front seat cushion trim at the bottom back is attached to the seat cushion frame using a hook. The hook may slip out of the seat cushion frame due to insufficient holding power.

### MASS PRODUCTION CHANGE

A plastic band is added to increase holding power.

### SUBJECT VIN & PRODUCTION DATE RANGE

**CX-5(KF) / (KE with VIN 600001~ for Russia)**

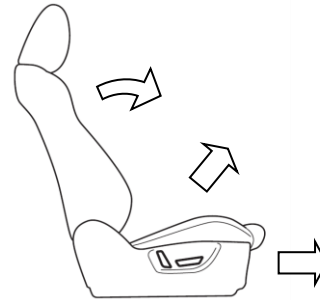
**Japan Built**

Spec.	VIN Range		Production Date Range
Australia	JM0 KF**** **	100013 - 115381	Feb. 1, 2017 - Jun.15, 2017
General (R.H.D.)	JM6 KF**** **		
General (L.H.D.)	JM7 KF**** **		
Israel	JMZ KF**** **		
Europe (L.H.D. & UK Specs.)	JMZ KF**** **	600052 - 623995	Feb. 14, 2017 - Jun.15, 2017
Russia	JMZ KE**** **		
US (2017 MY)	JM3 KF**** **	100044 - 170897	Dec. 27, 2016 - Jun.15, 2017
MEXICO (2018 MY)		100085 - 170889	Jan 7, 2017 - Jun.15, 2017

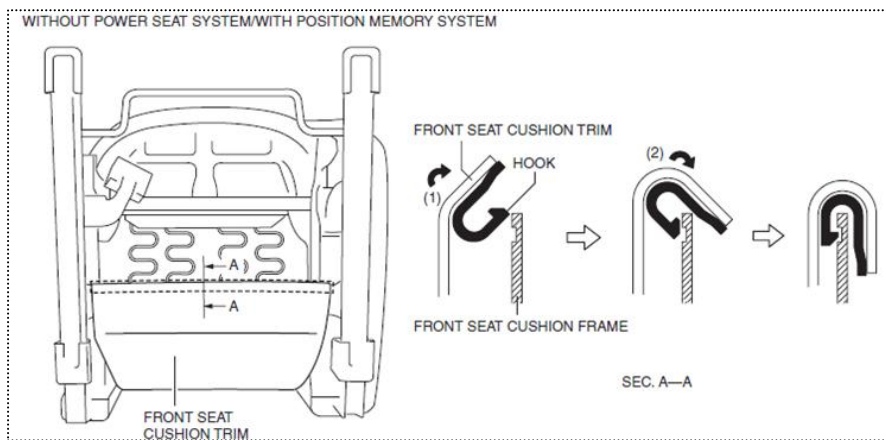
## REPAIR PROCEDURE

Tie the front seat cushion trim to the front seat cushion frame with a plastic band.

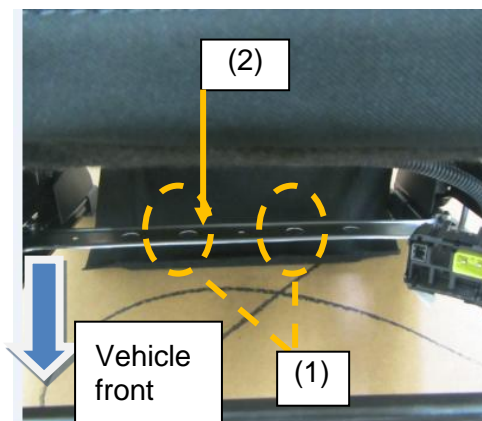
1. Move the seat to upper most and front most position. Tilt the seat back to the front.



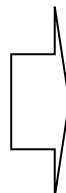
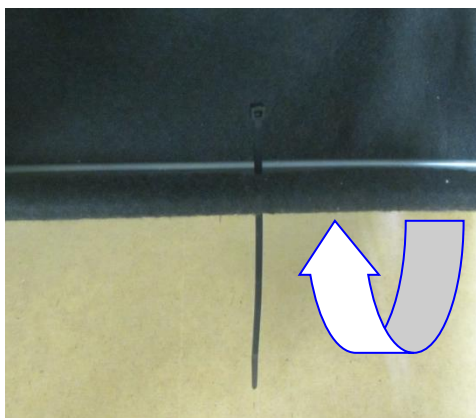
2. Move the hook in the order of arrows (1) and (2) shown in the figure and install the front seat cushion trim to the front seat cushion frame.



3. Pierce a hole in the trim with a small screwdriver or similar according to the seat frame hole (1) next to the small center hole (2). (Both holes (1) can be available but only use one hole)



4. Tie the trim and the seat cushion frame by putting the band through.



5. Cut off the excess portion of the band shorter than 5mm.



6. Hide the edge of the band under the seat cushion frame in order not to get injured when touched.



#### PARTS INFORMATION

Part Number (NEW)	Description	Qty.
H380-88-225	Band	1

#### WARRANTY INFORMATION

Assembly group	S - Body		
Subassembly group	S09 - SEATS & SEAT BELTS		
Symptom Code	89 (Out of proper position)		
Damage Code	9G (Improper assembly)		
Causal Part No.	****-88-111*/****-88-161* (Use the part number of seat cushion trim applicable to the subject vehicle)		
Quantity	0		
Operation No. and Labor Hours	<u>Operation No.</u>	<u>Labor Hrs.</u>	<u>Note</u>
	XXP2PARX	0.2	One side
	XXP2PBRX	0.3	Both sides
	Includes: To fasten the band and seat cushion trim, R&R		
Period Covered	Normal Warranty Period		

**NOTE:** Claim the band (H380-88-225) as related part.

Kimiaki Inooka  
Manager, Technical Information Group  
Technical Service Department  
Mazda Motor Corporation  
1H41262303, 152-153(MC Internal Use)