

■ FRONT ACCESSORY SOCKET REMOVAL/INSTALLATION

id092100900500

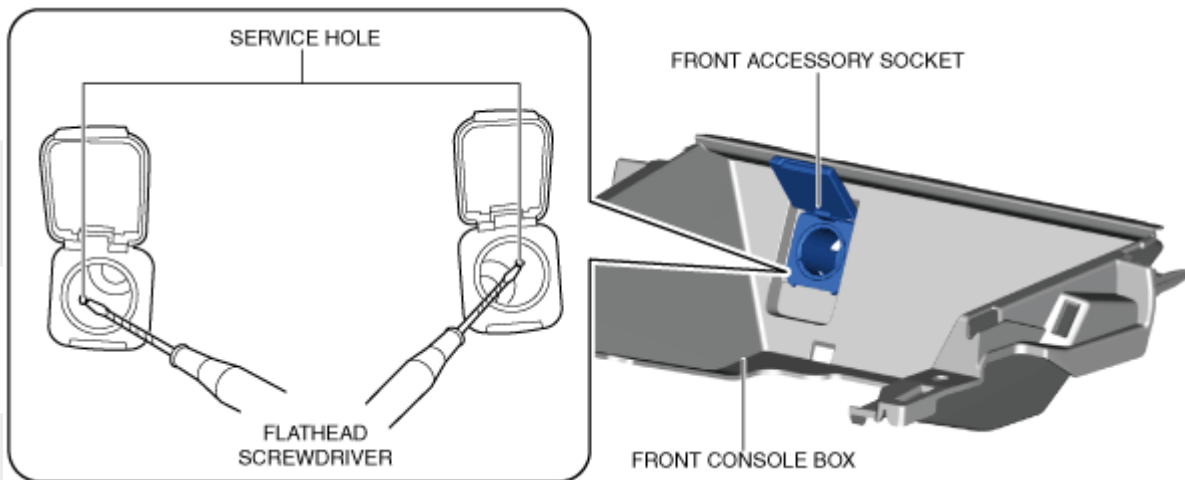
id092100900500

1. Disconnect the negative battery terminal. (See NEGATIVE BATTERY TERMINAL DISCONNECTION/CONNECTION.)

2. Remove the following parts:

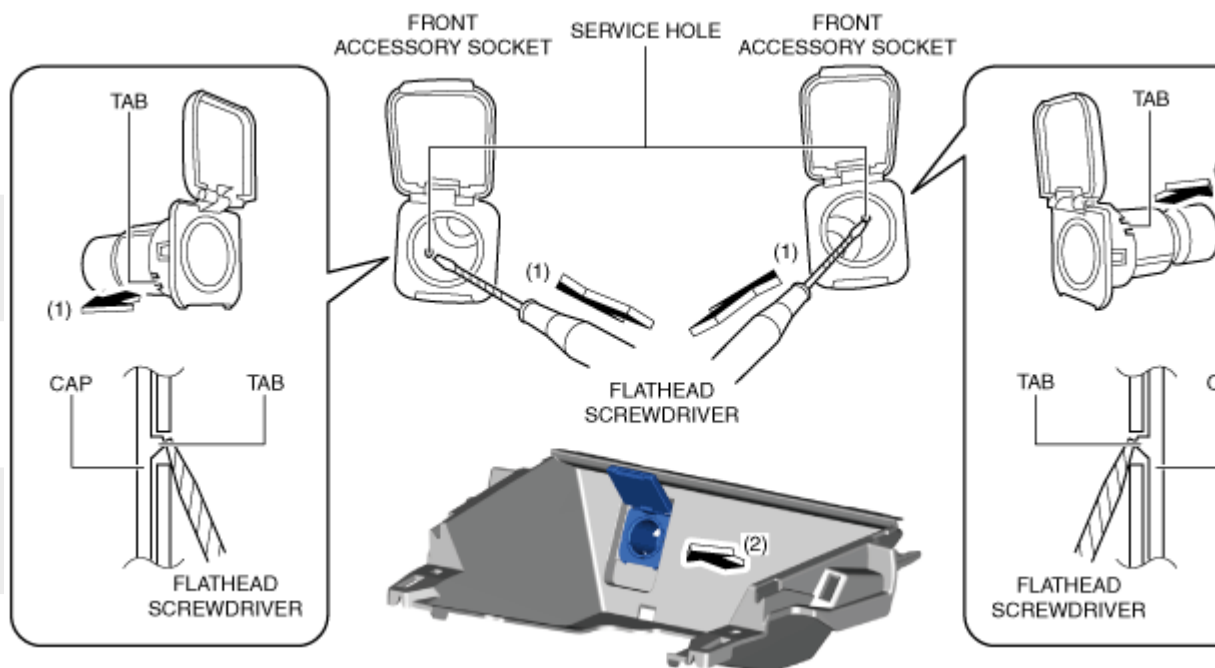
(1) Console side panel (See CONSOLE SIDE PANEL REMOVAL/INSTALLATION.) (2) Switch panel (See SWITCH PANEL REMOVAL/INSTALLATION.) (3) Selector lever knob (See SELECTOR LEVER COMPONENT REMOVAL/INSTALLATION.) (4) Shift panel (See SHIFT PANEL REMOVAL/INSTALLATION.) (5) Front console box (See FRONT CONSOLE BOX REMOVAL/INSTALLATION.)

3. Insert a tape-wrapped flathead screwdriver into the service hole in the position shown in the figure.



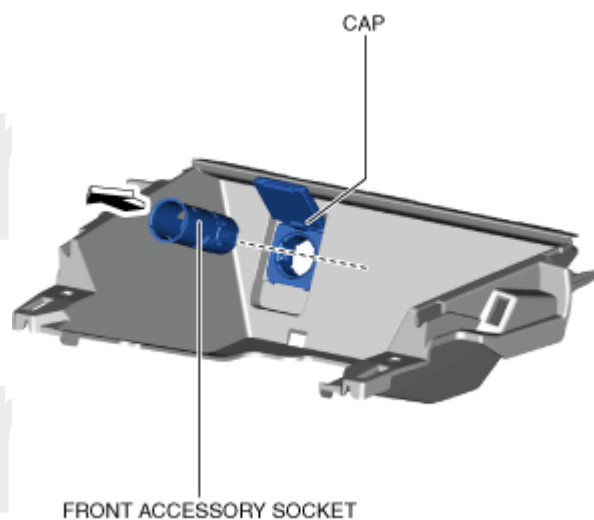
ac5uuw00007230

4. While pressing the cap tab in the direction of arrow (1) shown in the figure, push out the front accessory socket in the direction of arrow (2) to detach the cap tab from the socket.



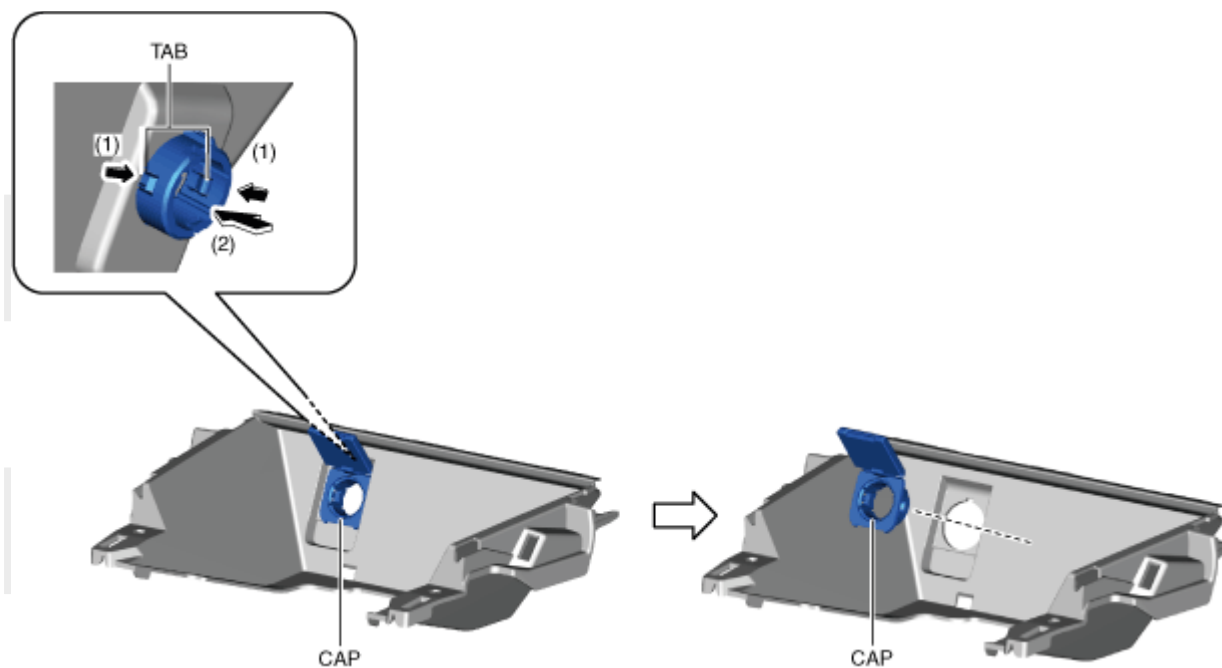
ac5uuw00007444

5.Pull the front accessory socket in the direction of the arrow shown in the figure and remove it.



ac5uuw00007231

6.While pressing the cap tabs in the direction of arrows (1) shown in the figure, press the cap in the direction of arrow (2) to detach the cap tabs from the front console box.



ac5uuw00007232

7.Remove the cap.

8.Install in the reverse order of removal.