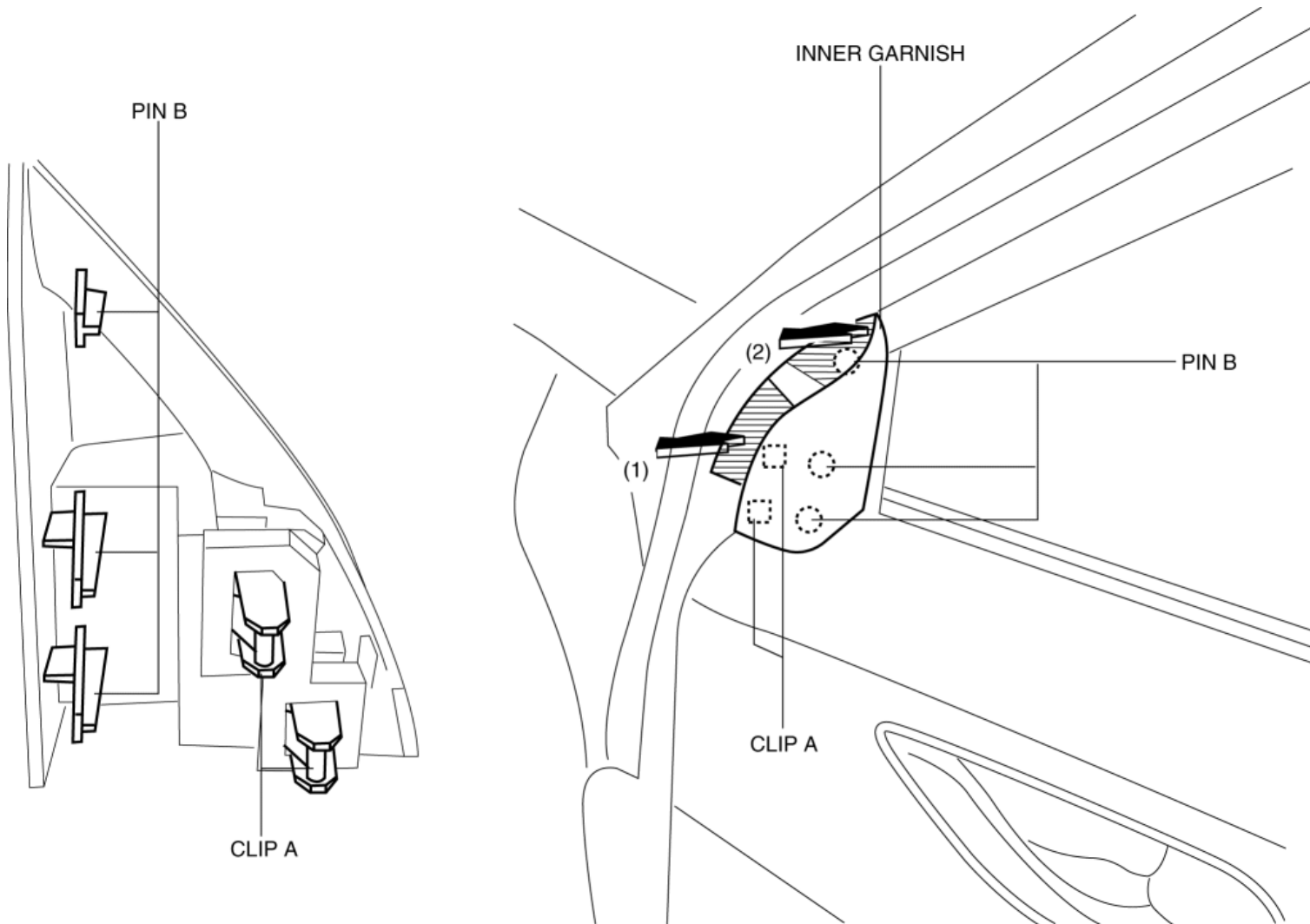


[< Previous](#) [Next >](#)

2013 - CX-5 - Body and Accessories

INNER GARNISH REMOVAL/INSTALLATION

1. Take the shaded area shown in the figure, and pull the inner garnish in the direction of the arrow (1) while detaching clips A.



2. Take the shaded area shown in the figure, and remove the inner garnish in the direction of the arrow (2) while detaching pins B.
3. Install in the reverse order of removal.

[< Previous](#) [Next >](#)[Back to Top](#)

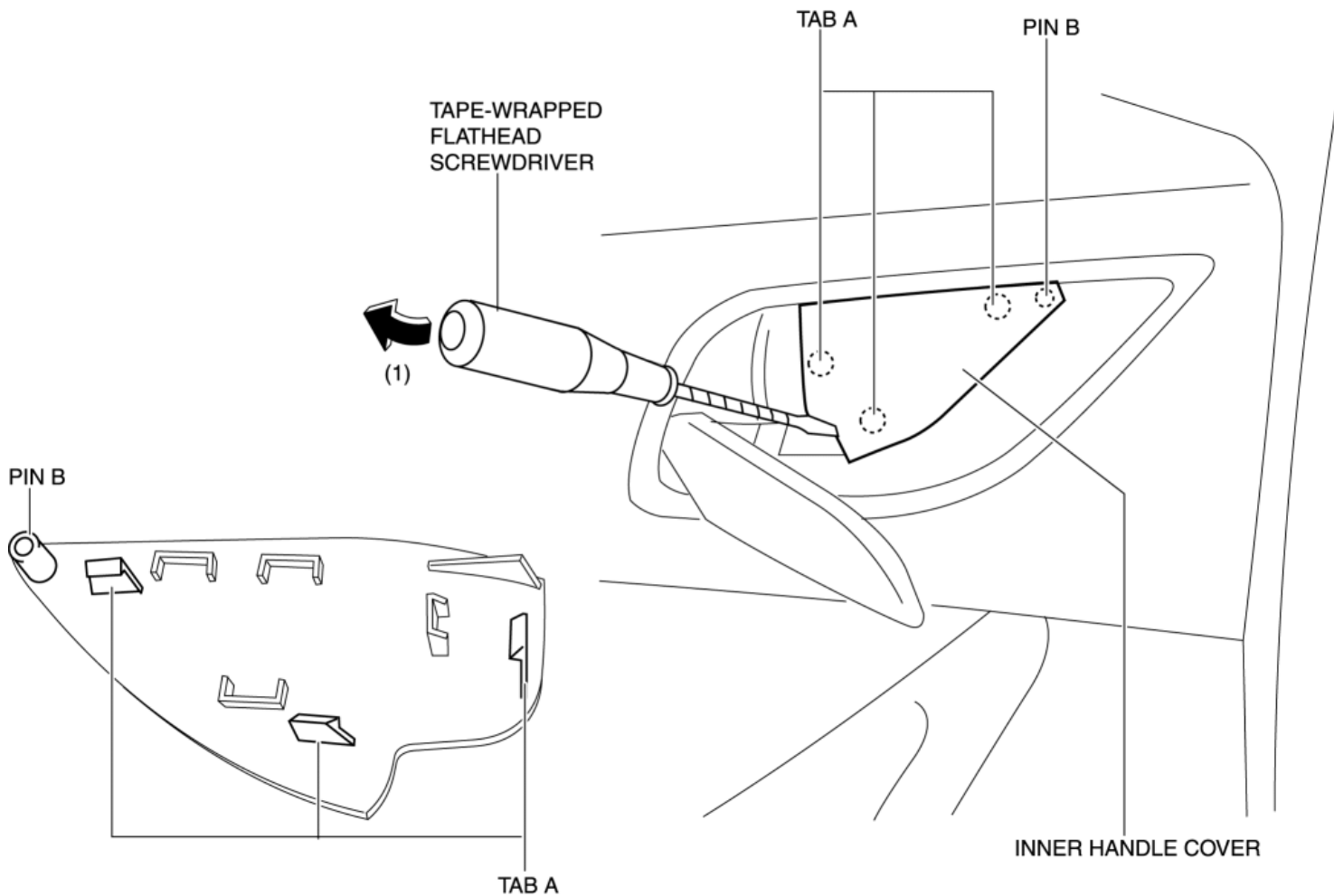
© 2012 Mazda North American Operations, U.S.A.

< Previous Next >

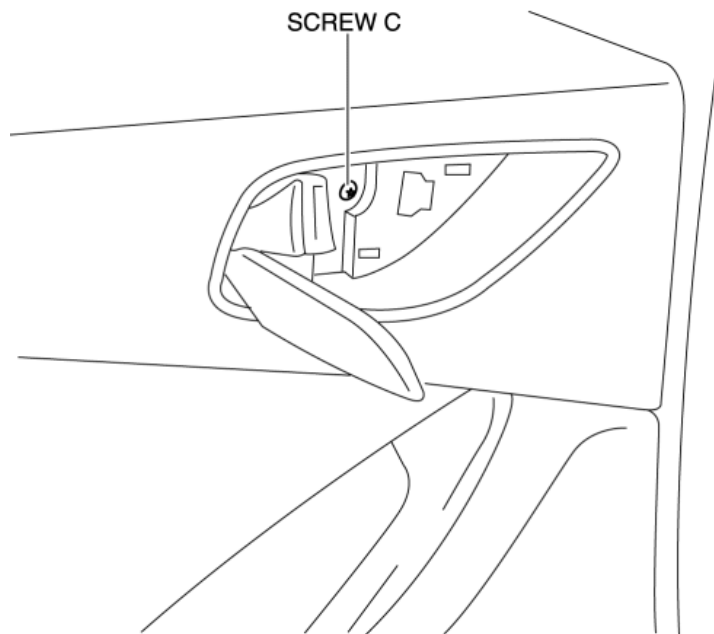
2013 - CX-5 - Body and Accessories

FRONT DOOR TRIM REMOVAL/INSTALLATION

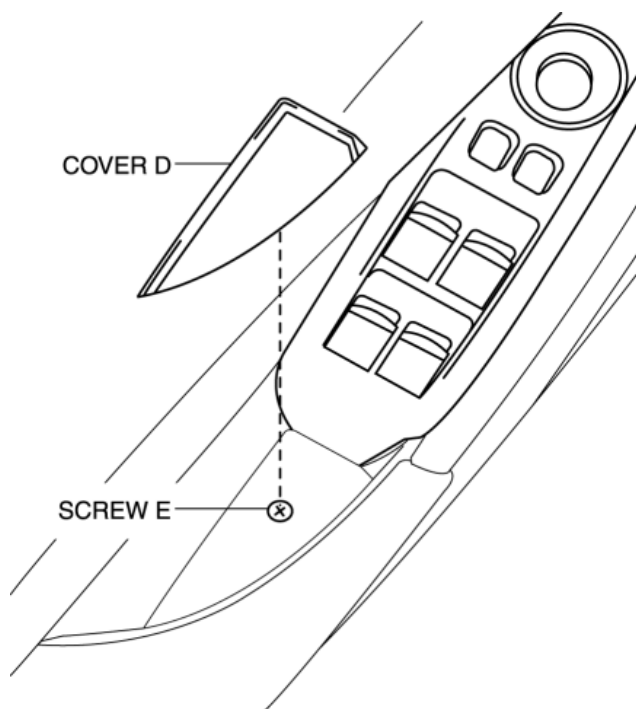
1. Disconnect the negative battery cable. (See **NEGATIVE BATTERY CABLE DISCONNECTION/CONNECTION [SKYACTIV-G 2.0]**.)
2. Remove the inner garnish. (See **INNER GARNISH REMOVAL/INSTALLATION**.)
3. Insert a tape-wrapped flathead screwdriver in the position indicated by the arrow (1) in the figure and remove the inner handle cover while detach tabs A, pin B.



4. Remove the screw C.



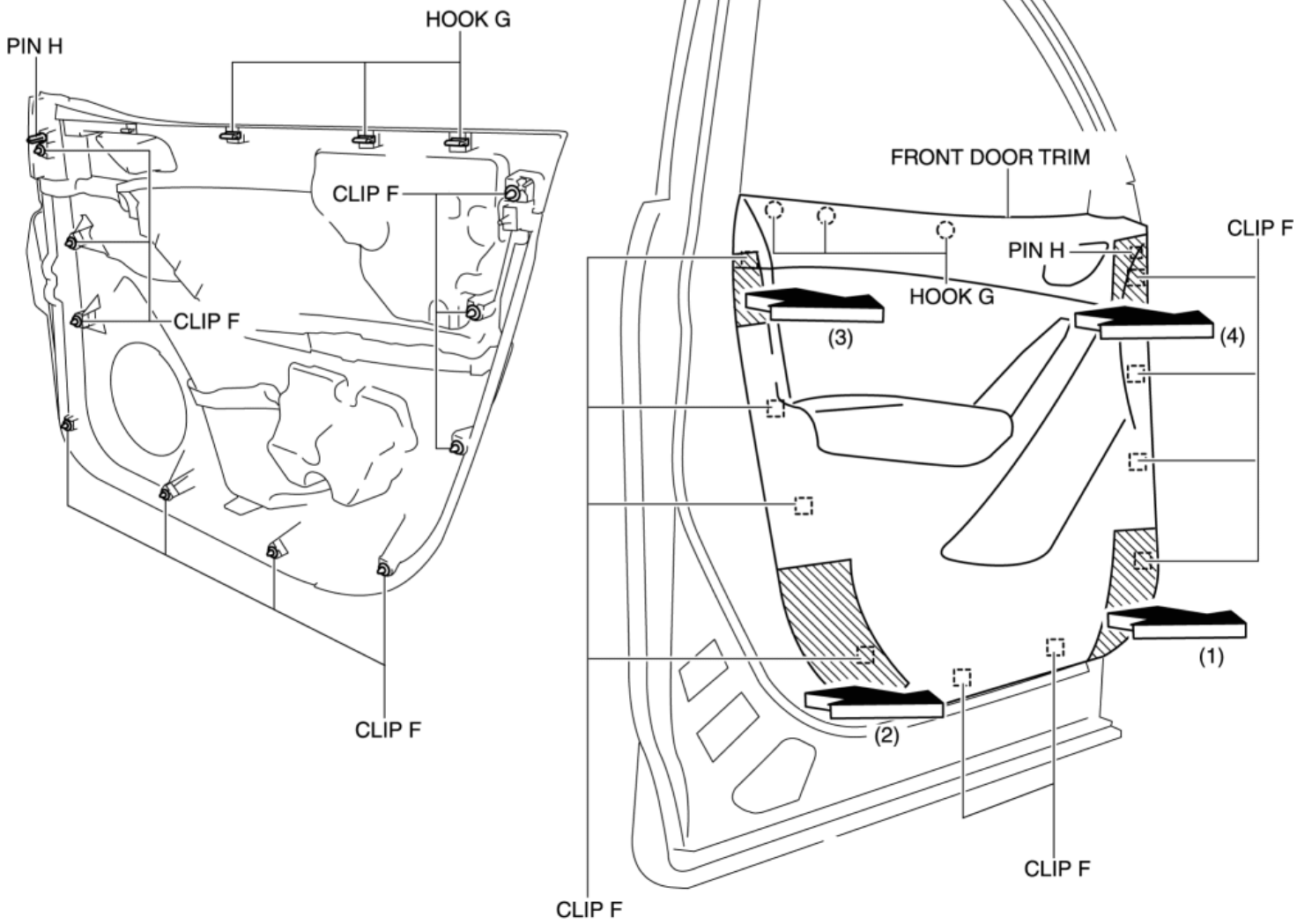
5. Remove the cover D, then remove the screw E.



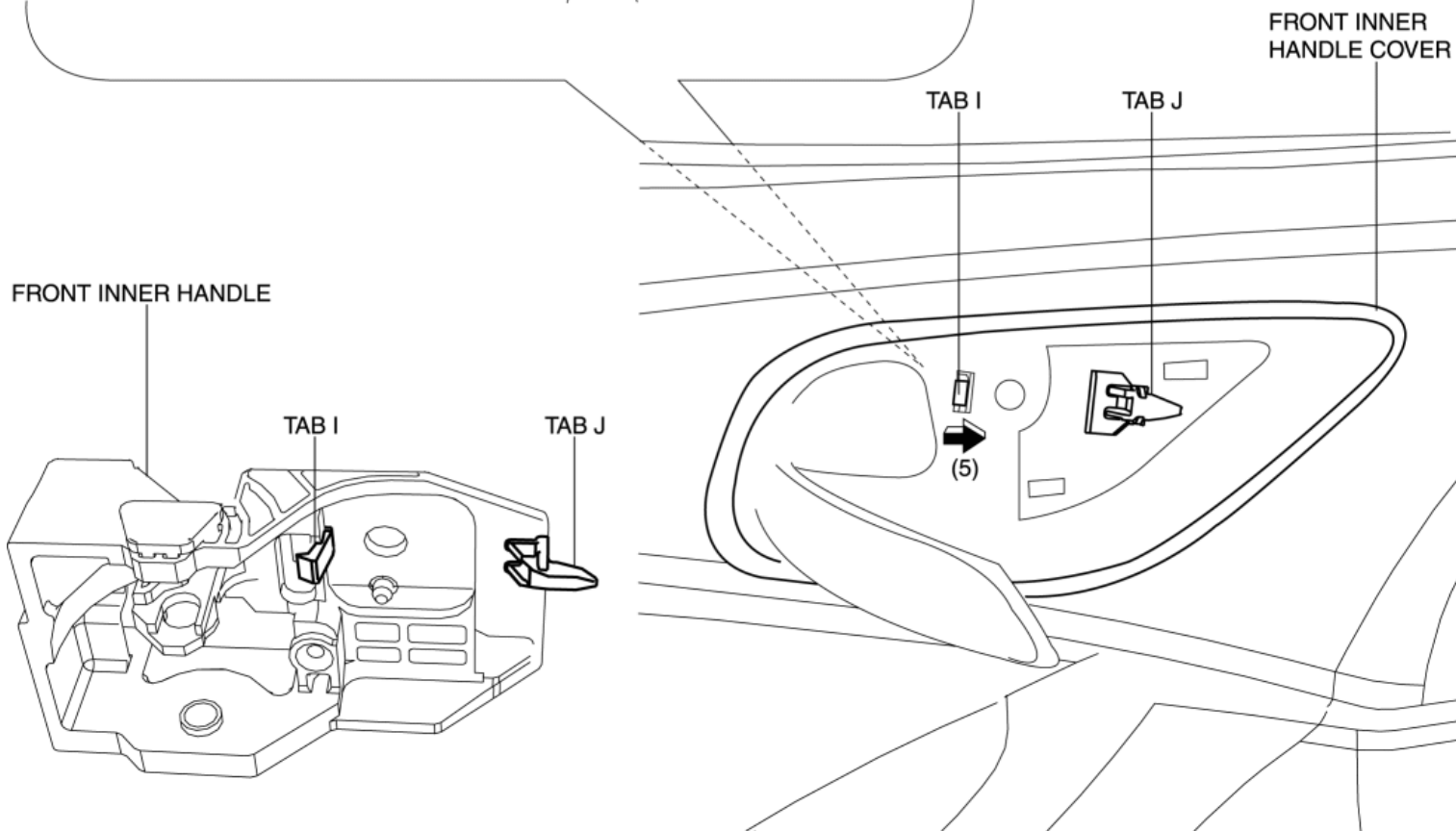
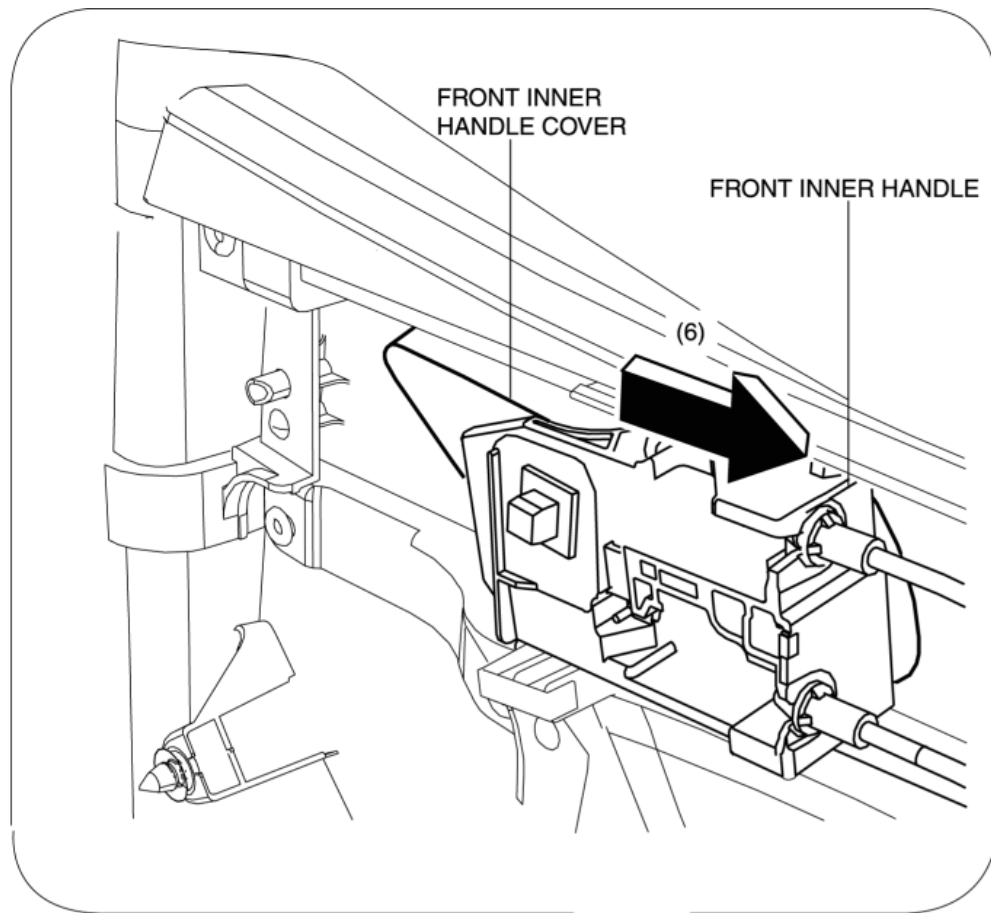
6. Take the shaded area shown in the figure, and pull the front door trim in the direction of the arrow in the order of (1), (2), (3), (4) while detaching clips F, hooks G and pin H.

CAUTION:

- If the front door trim is removed in the same way as past vehicles by pulling it upward, it could damage clips F, hooks G and pin H. When removing the front door trim, always pull it in the direction of the arrow shown in the figure.



7. Remove the tab I in the direction of the arrow (5) shown in the figure.



8. Remove the front inner handle in the direction of the arrow (6) shown in the figure while detaching the tab J.
9. Disconnect the power window main switch connector (driver-side) or power window subswitch connector (passenger-side).
10. Install in the reverse order of removal.

< Previous Next >

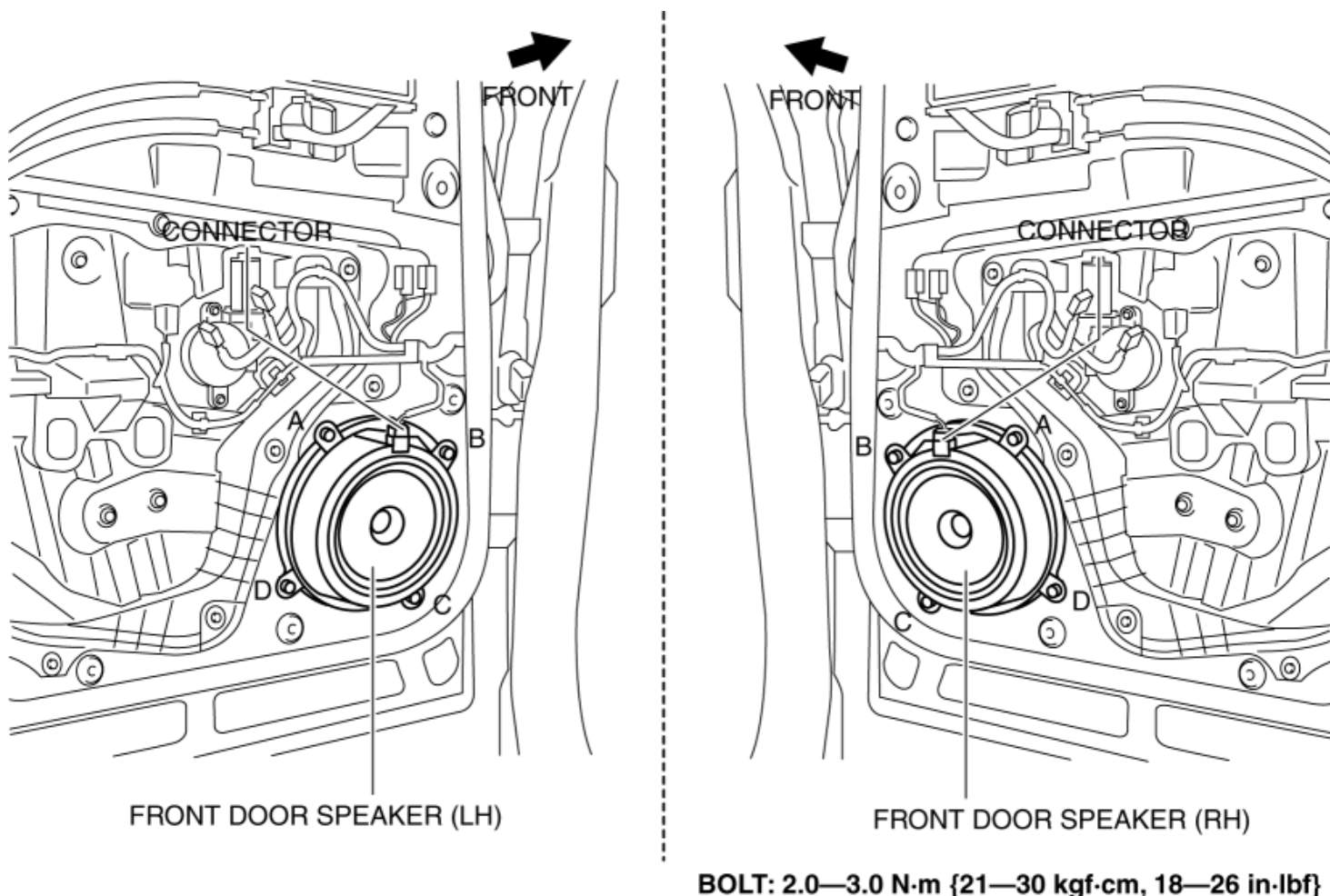
2013 - CX-5 - Body and Accessories

FRONT DOOR SPEAKER REMOVAL/INSTALLATION

Without Bose®

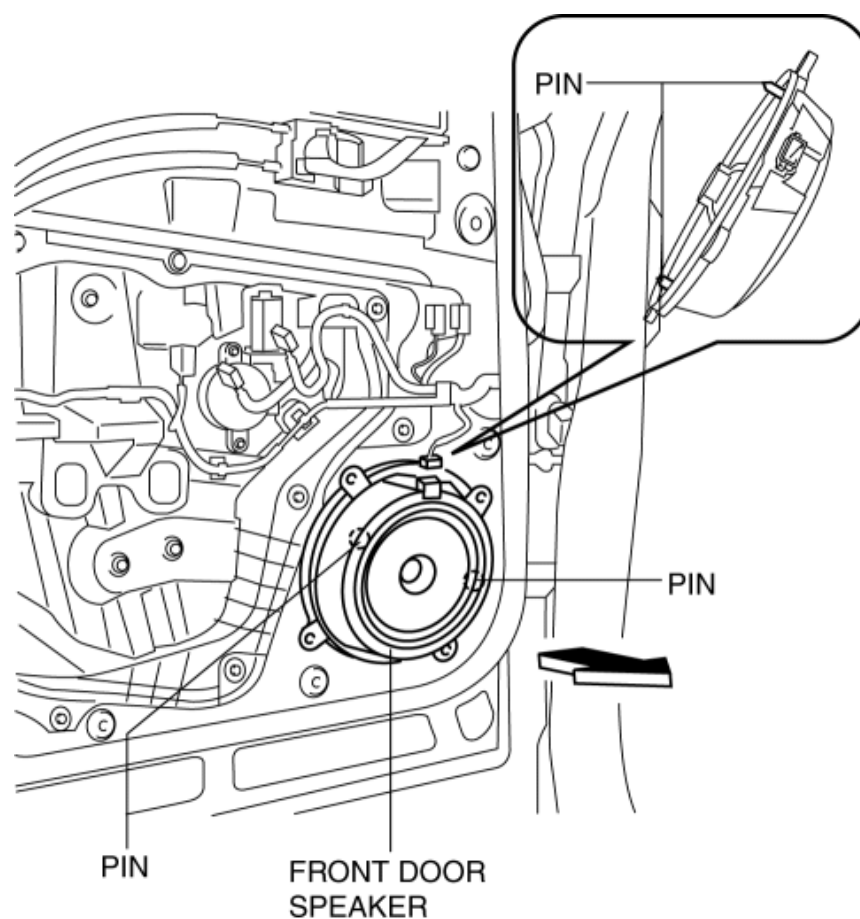
NOTE:

- If the procedure is performed while holding the front door speaker cone, it could deform the cone causing a malfunction. Therefore, perform the procedure while holding any part other than the cone.
1. Disconnect the negative battery cable. (See [NEGATIVE BATTERY CABLE DISCONNECTION/CONNECTION \[SKYACTIV-G 2.0\]](#).)
 2. Remove the following parts:
 - a. Inner garnish (See [INNER GARNISH REMOVAL/INSTALLATION](#))
 - b. Front door trim (See [FRONT DOOR TRIM REMOVAL/INSTALLATION](#).)
 3. Disconnect the connector.



4. Remove the bolts in alphabetical order.

5. Pull the front door speaker in the direction of the arrow shown in the figure and remove it while detaching the pins.



6. Install in the reverse order of removal.

With Bose®

1. Disconnect the negative battery cable. (See [NEGATIVE BATTERY CABLE DISCONNECTION/CONNECTION \[SKYACTIV-G 2.0\]](#).)
2. Remove the following parts:
 - a. Inner garnish (See [INNER GARNISH REMOVAL/INSTALLATION](#))
 - b. Front door trim (See [FRONT DOOR TRIM REMOVAL/INSTALLATION](#).)
3. Disconnect the connector.

< Previous Next >

2013 - CX-5 - Body and Accessories

FRONT DOOR GLASS REMOVAL/INSTALLATION

1. Perform the front door glass preparation. (See [Front Door Glass Preparation](#).)

NOTE:

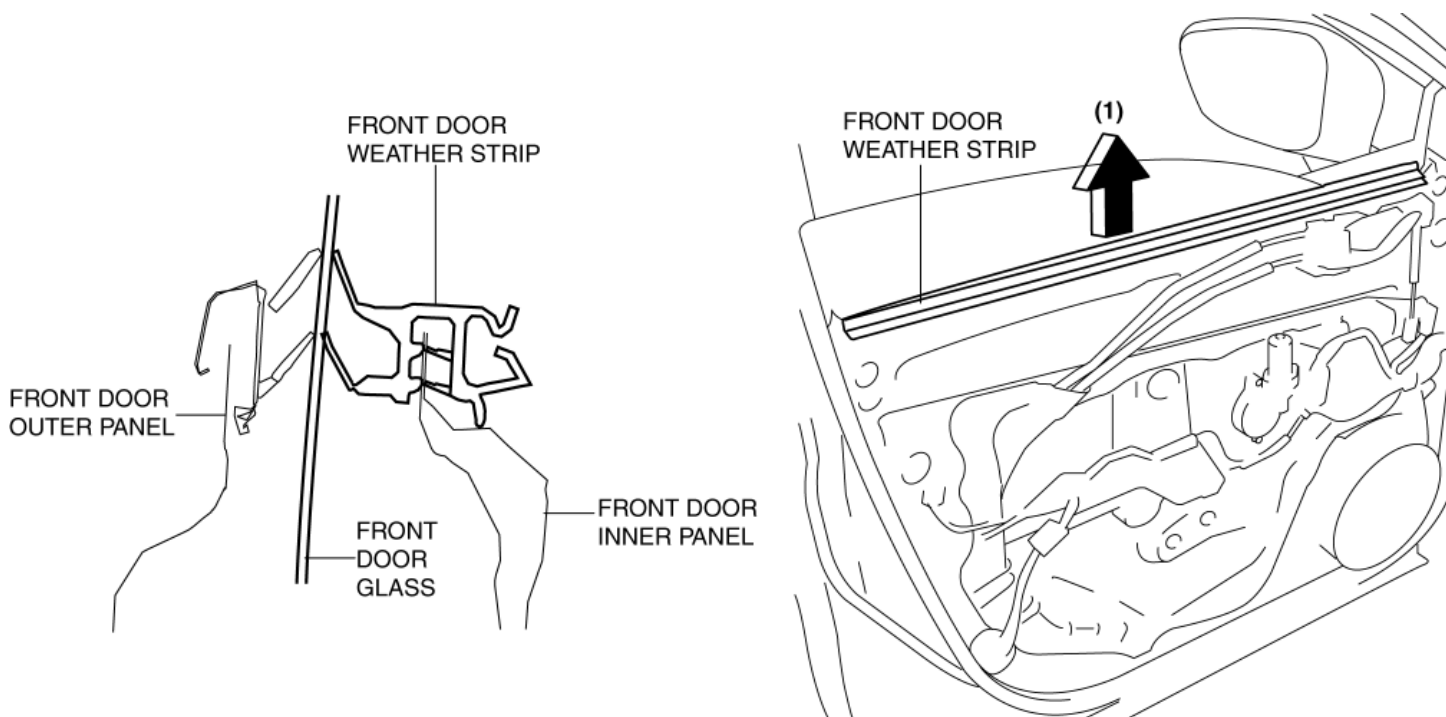
- Before removing the front door glass, the removal procedure for the front door glass installation bolt can be facilitated by adjusting the top of the front door glass to the position **approx. 90 mm {3.5 in}** away from the upper part of the front beltline molding.

2. Disconnect the negative battery cable. (See [NEGATIVE BATTERY CABLE DISCONNECTION/CONNECTION \[SKYACTIV-G 2.0\]](#).)

3. Remove the following parts:

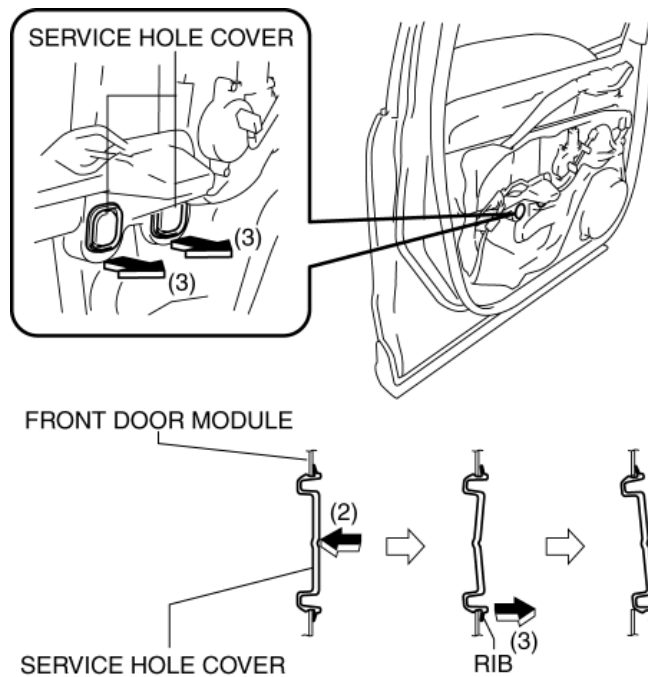
- Inner garnish (See [INNER GARNISH REMOVAL/INSTALLATION](#).)
- Front door trim (See [FRONT DOOR TRIM REMOVAL/INSTALLATION](#).)
- Front door speaker (See [FRONT DOOR SPEAKER REMOVAL/INSTALLATION](#).)

4. Remove the weather strip arrow (1) shown in the figure.



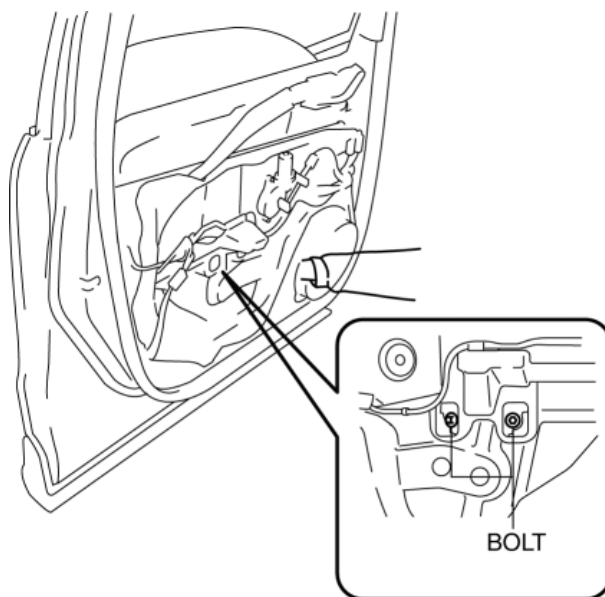
5. Press the center of the service hole cover in the direction of arrow (2) shown in the figure.

6. Remove the service hole cover by holding its rib and partially peeling it back in the direction of arrow (3) shown in the figure.



7. Insert your hand through the front door speaker installation hole while supporting the front door glass and adjust the position of the front door glass so that the front door glass installation bolt is in a position in which it can be removed from the service hole cover opening.

8. Remove bolts.

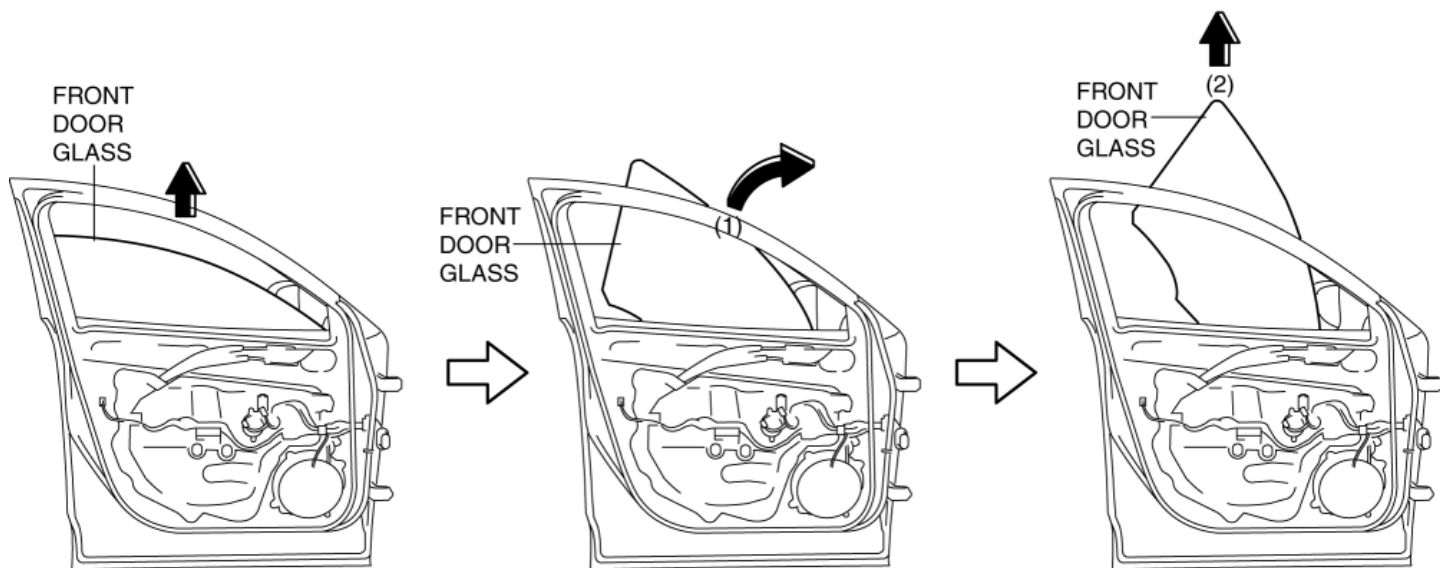


BOLT : 4.5—6.5 N·m {46—66 kgf·cm, 40—57 in·lbf}

CAUTION:

- If the bolts are removed without supporting the front door glass, the front door glass may fall off and be damaged. Remove the bolts while inserting your hand into the front door speaker installation hole to support the front door glass.

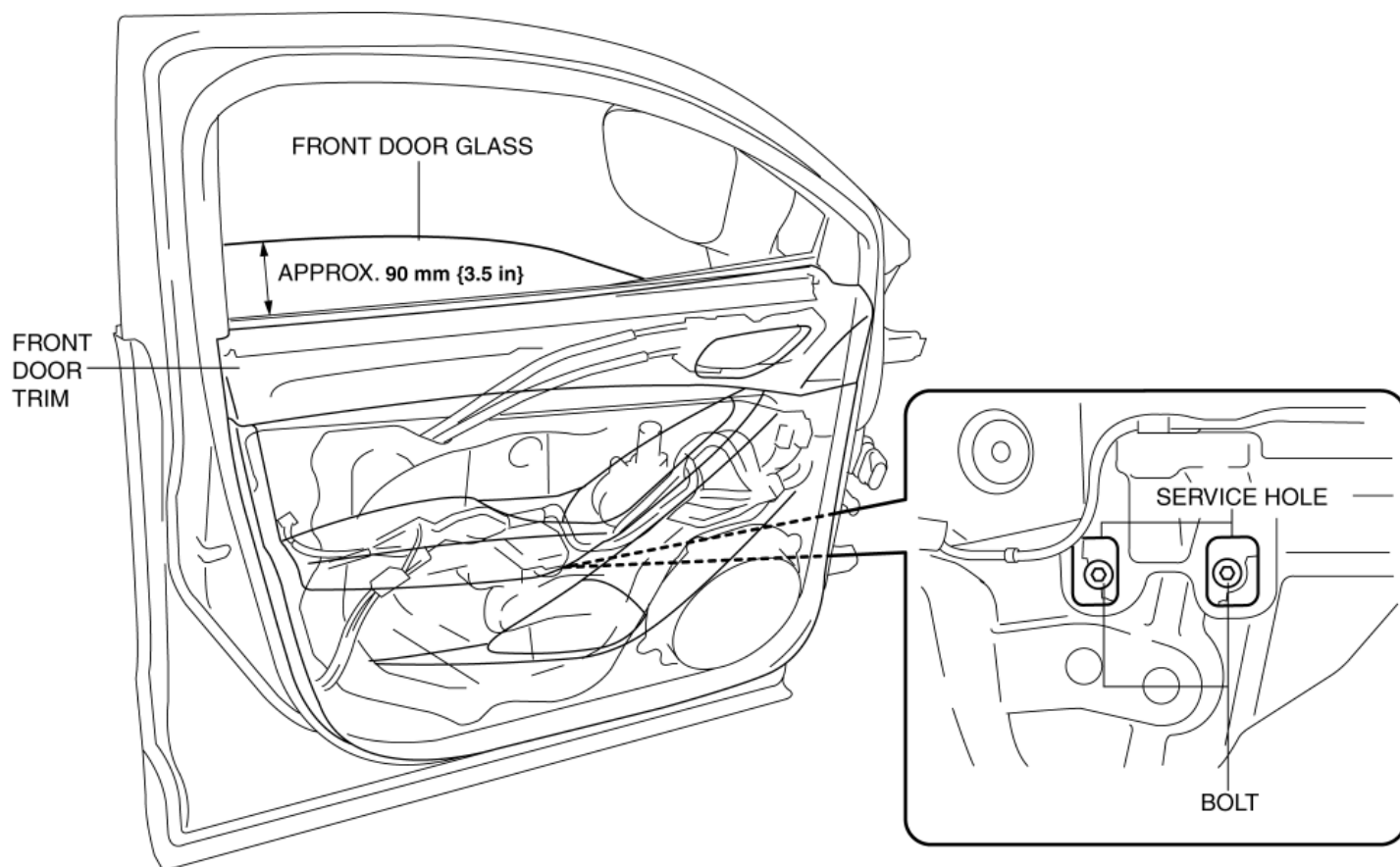
9. Lift up the front door glass, tilt it in the direction of arrow (1) shown in the figure, then remove it in the direction of arrow (2).



10. Install in the reverse order of removal.

Front Door Glass Preparation

- Perform the adjusting the top of the front door glass to the position **approx. 90 mm {3.5 in}** away from the upper part of the front door trim.



BOLT : 4.5—6.5 N·m {46—66 kgf·cm, 40—57 in·lbf}

< Previous Next >

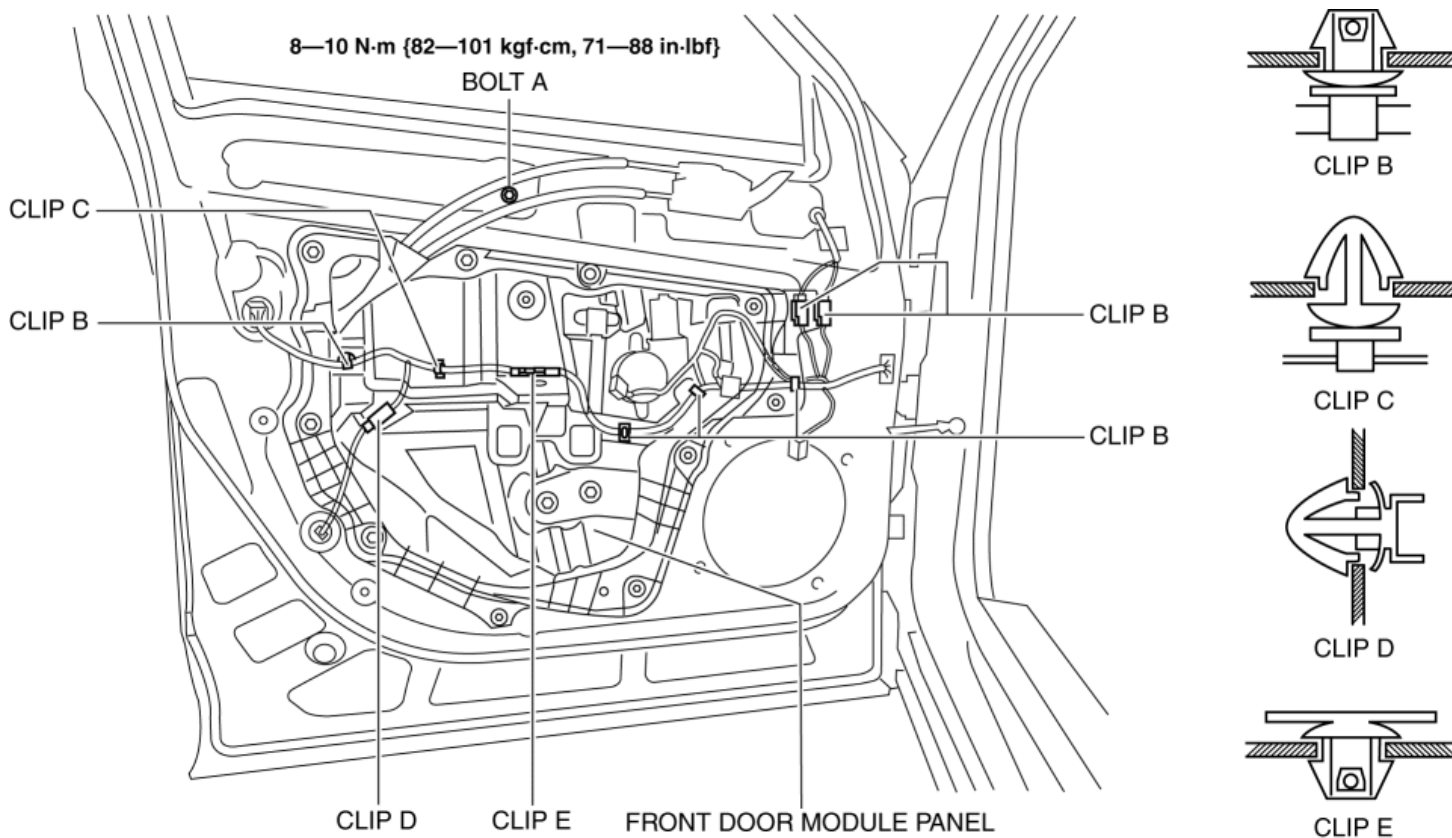
2013 - CX-5 - Body and Accessories

FRONT DOOR MODULE PANEL REMOVAL/INSTALLATION

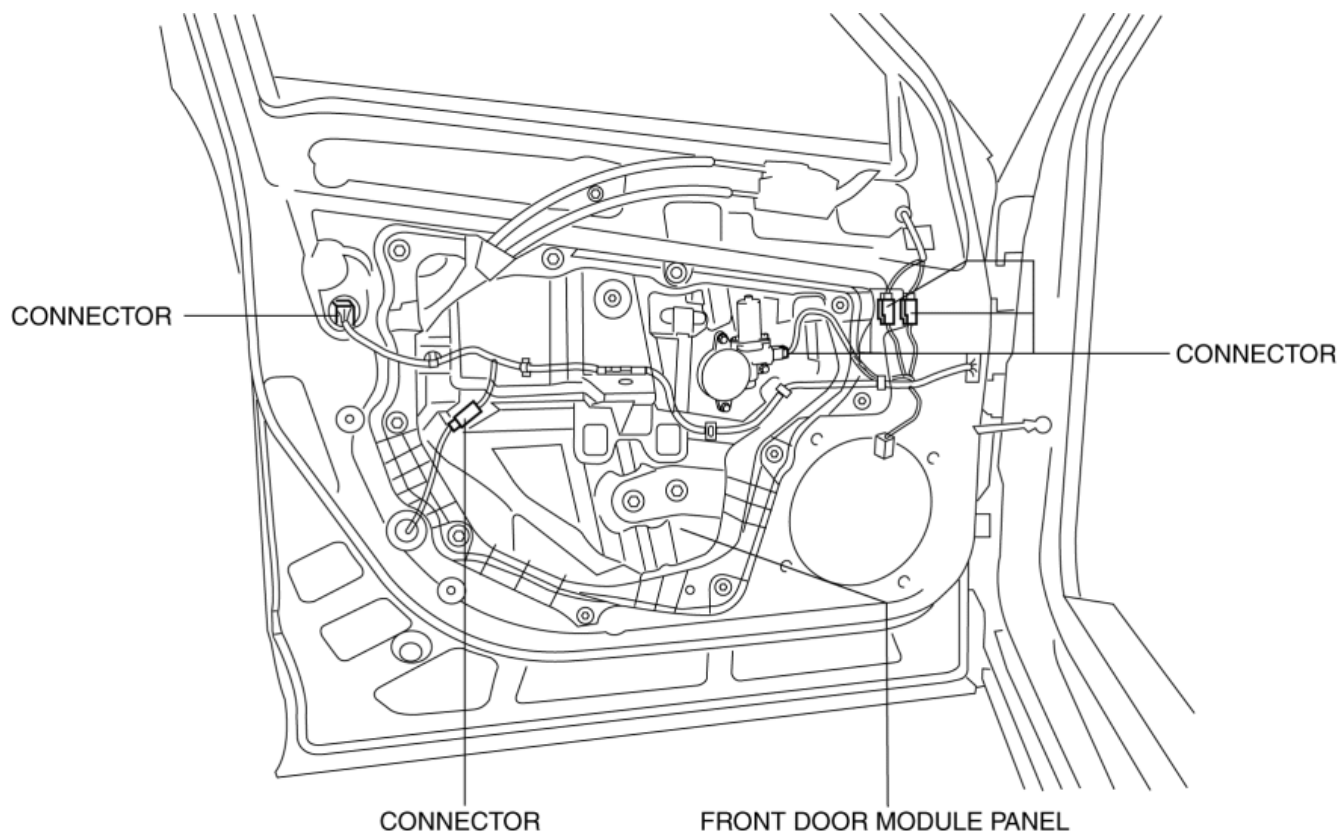
1. Perform the front door glass preparation. (See **FRONT DOOR GLASS REMOVAL/INSTALLATION**.)
2. Disconnect the negative battery cable. (See **NEGATIVE BATTERY CABLE DISCONNECTION/CONNECTION [SKYACTIV-G 2.0]**.)
3. Remove the following parts:
 - a. Inner garnish (See **INNER GARNISH REMOVAL/INSTALLATION**.)
 - b. Front door trim (See **FRONT DOOR TRIM REMOVAL/INSTALLATION**.)
 - c. Front door speaker (See **FRONT DOOR SPEAKER REMOVAL/INSTALLATION**.)
 - d. Front door glass (See **FRONT DOOR GLASS REMOVAL/INSTALLATION**.)

NOTE:

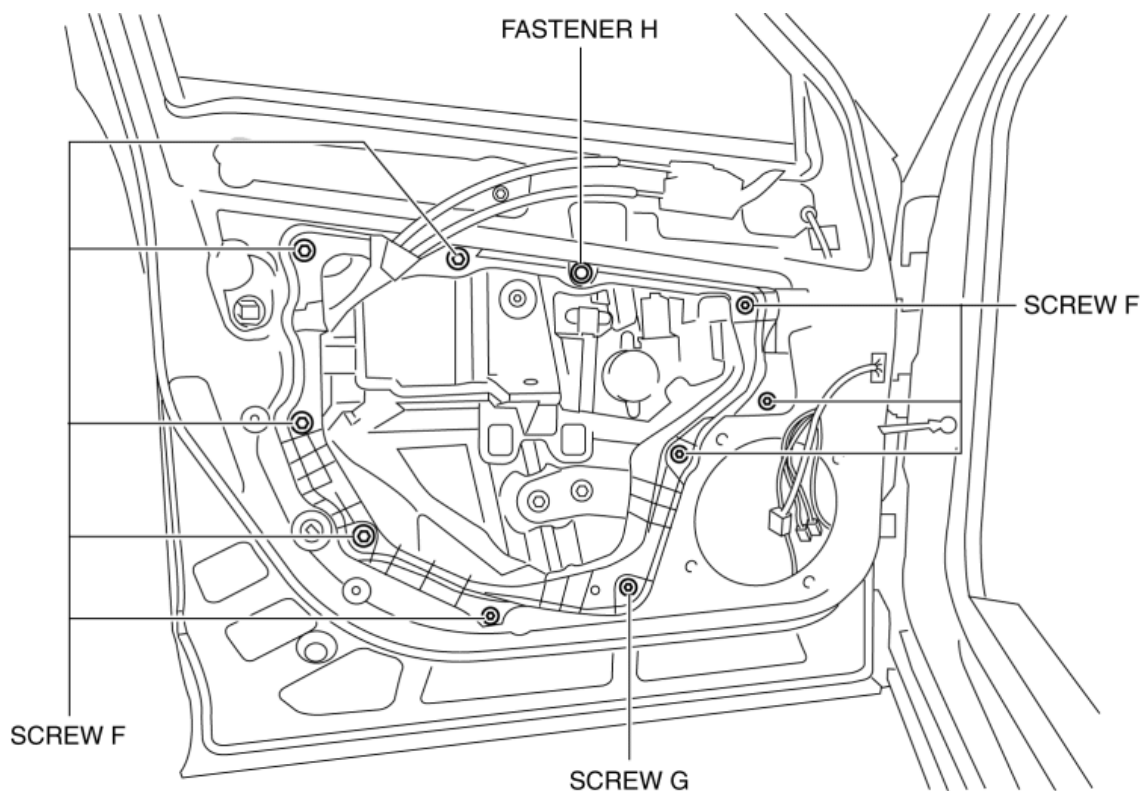
- After removing the front door trim, secure the inner handle using screws so that the procedure is performed smoothly.
4. Remove bolt A.



5. Detach front door wiring harness securing clips B, C, D and E.
6. Disconnect the connectors shown in the figure.



7. Remove screws F.



8. Remove screw G.

9. Remove fastener H.

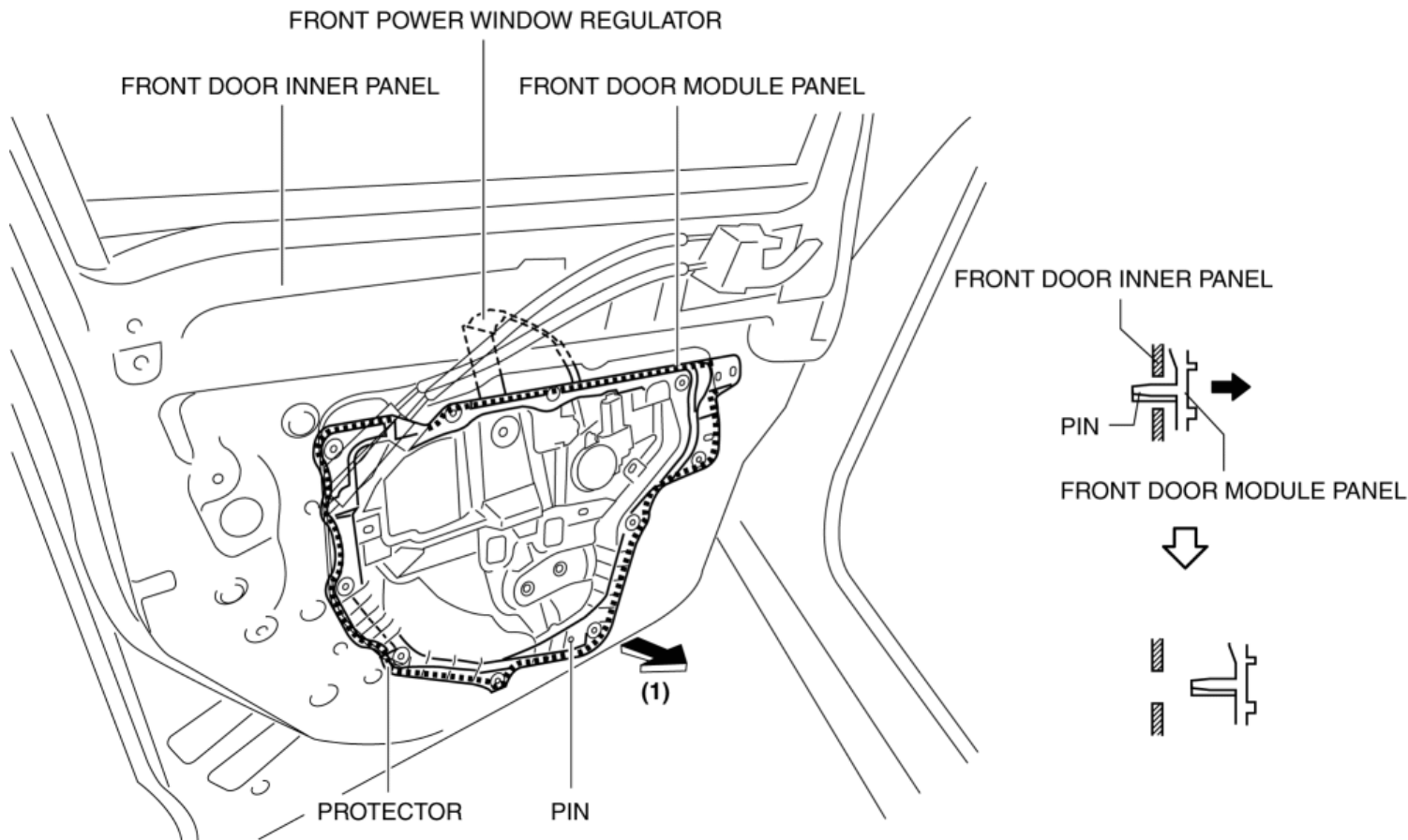
10. Pull the front door module panel in the direction of arrow (1) shown in the figure and remove the protector and pin from the front door inner panel.

CAUTION:

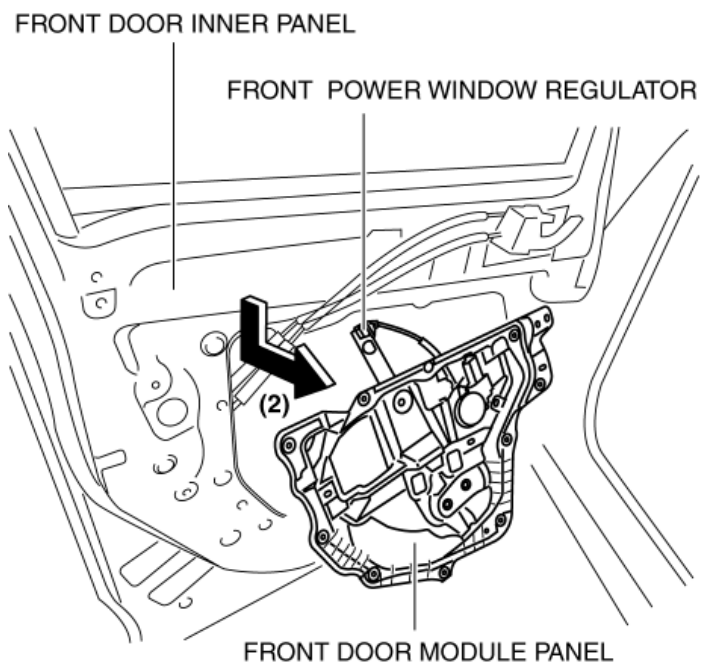
- If the protector does not come out easily from the front door inner panel, pulling the front door module panel

forcibly may cause the front door module panel to deform. If the protector does not come out easily, remove the front door module panel while gradually removing the protector.

- If the front power window regulator contacts the front door inner panel during the front door module panel removal, the coating film on the front door inner panel may get scratched, and the front door module panel and front power window regulator could be damaged. Remove the front door module panel while verifying that the front power window regulator and the front door inner panel do not contact each other.



11. Move the front door module panel in the direction of arrow (2) shown in the figure so that the upper part of the front power window regulator does not contact the front door inner panel, and remove the front door module panel and the front power window regulator as a single unit.



12. Remove the front power window motor. (See [POWER WINDOW MOTOR REMOVAL/INSTALLATION](#).)

13. Remove the front power window regulator. (See **FRONT POWER WINDOW REGULATOR REMOVAL/INSTALLATION.**)
14. Install in the reverse order of removal.

[< Previous](#) [Next >](#)

© 2012 Mazda North American Operations, U.S.A.

[Back to Top](#)