

# Service Information

Mazda Motor Corporation

3-1, Shinchu, Fuchu-cho, Aki-gun  
Hiroshima 730-8670, Japan  
TEL : 81(82)287-5323  
FAX : 81(82)287-5220

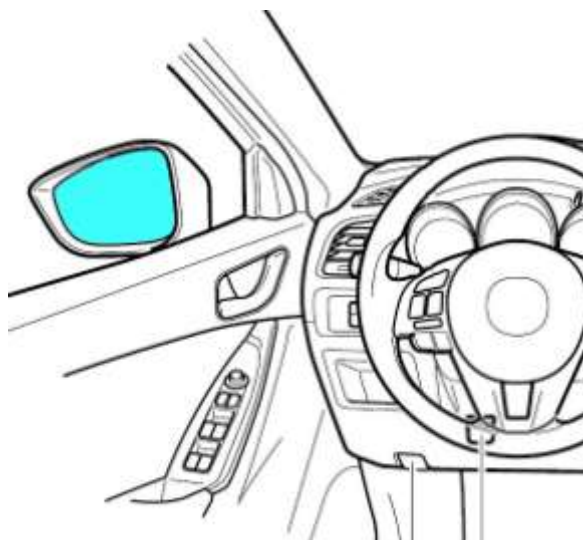


Category <b>S</b>	<b>Repair Guidance</b>	Ref. No. R042/13	Page 1 of 6
Coverage <input type="checkbox"/> Distributor only <input checked="" type="checkbox"/> Please inform your dealers		Date Issued June 21, 2013	
Please convey this information to your <input type="checkbox"/> Director <input checked="" type="checkbox"/> General Manager <input checked="" type="checkbox"/> Warranty Dept. <input checked="" type="checkbox"/> Parts Dept. <input checked="" type="checkbox"/> Training Dept. <input checked="" type="checkbox"/> Field Rep.		Date Revised	
Applicable Model  CX-5 (KE)		Applicable Countries or Specifications  Europe	

## Subject: Outer mirror vibration when driving on highway

### DESCRIPTION

Some vehicles may exhibit a vibration on outer mirror when the vehicle is driven at high speed.



### CAUSE

Due to a lack of rigidity of the outer mirror base, the mirror vibrates caused by vehicle vibration or wind pressure.

### MASS PRODUCTION CHANGE

TBD

### BEGINNING VIN & DATE OF MODIFICATION

TBD

## REPAIR PROCEDURE

Depending on VIN, perform all applicable repair(s) according to the following chart.

VIN Range	Applicable repair		
	Replacement of base cover set of power outer mirror with modified one (Refer to Service Information R020/13)	Installation of outer mirror reinforcement	Replacement of outer mirror garnish (upper & lower) with modified one
JMZKE***** 100001 - 131395	A	B	C
JMZKE***** 131396 - 147465	—	B	C
JMZKE***** 147466 - 999999	—	—	C

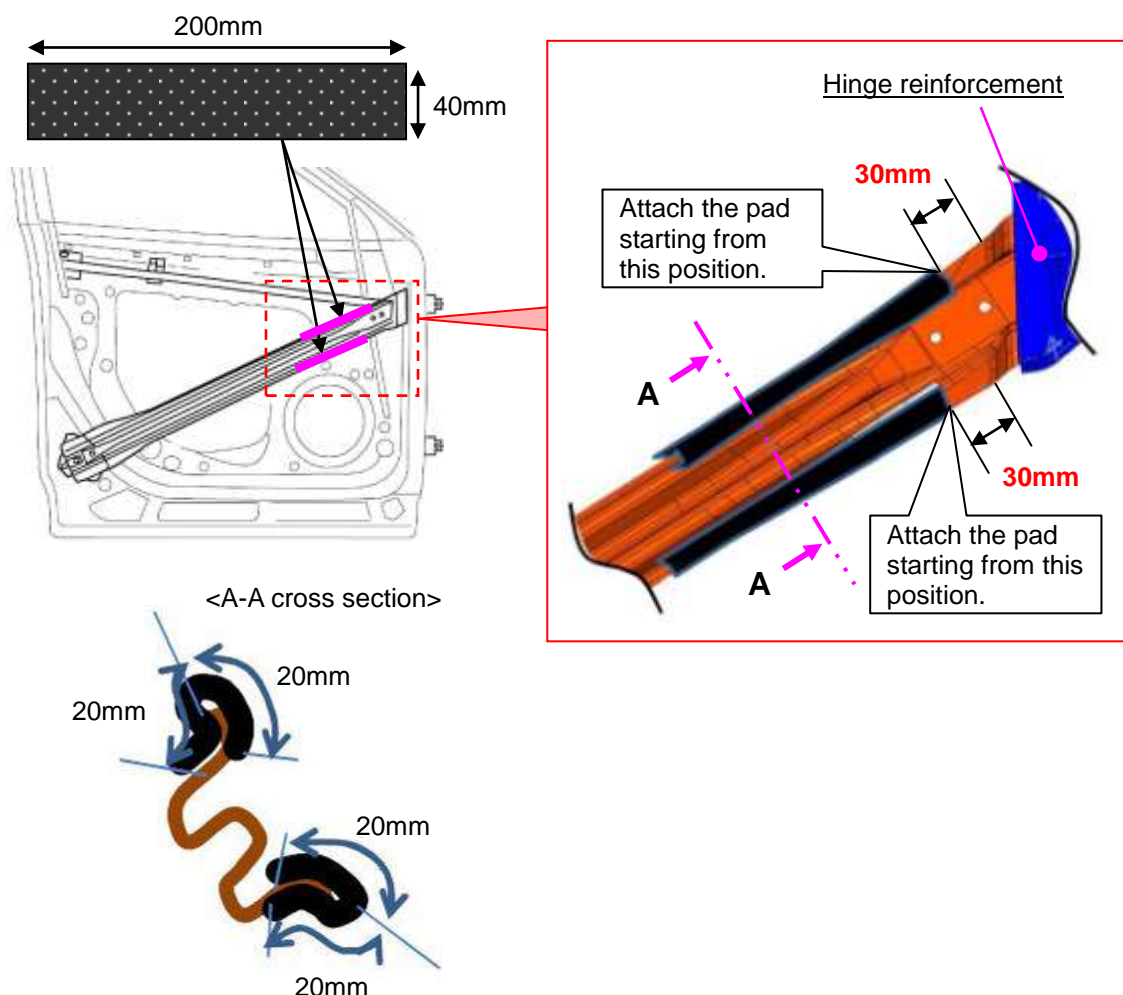
A: Replace the base cover set of the power outer mirror with a modified one. Refer to the Service Information R020/13 for the removal and installation procedure.

B: Install the outer mirror reinforcement. See the procedure below.

1. Remove the outer mirror according to the Workshop Manual "POWER OUTER MIRROR REMOVAL/INSTALLATION".

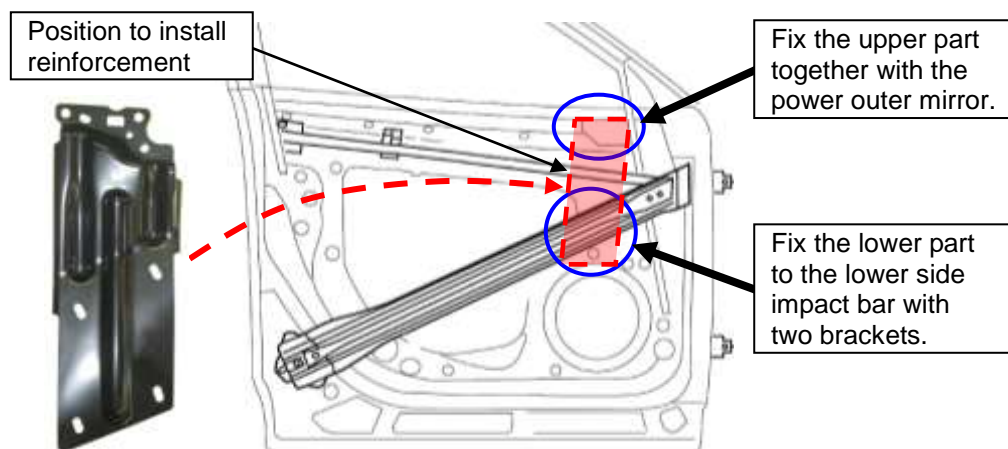
2. For rust prevention, attach the self-adhesive pad (200mm X 40mm) to the lower side impact bar where the bracket and reinforcement are installed.

**Note:** Attach the pad starting from the position indicated in the below figure.



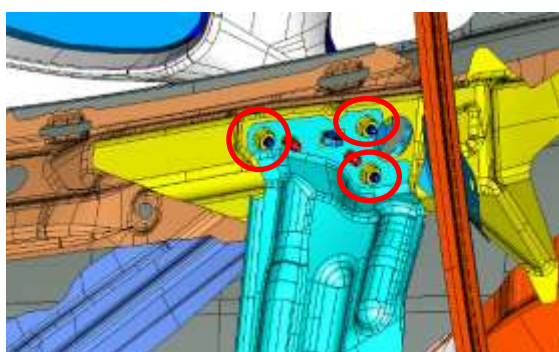
### 3. Install the reinforcement.

<Figure of reinforcement installation>



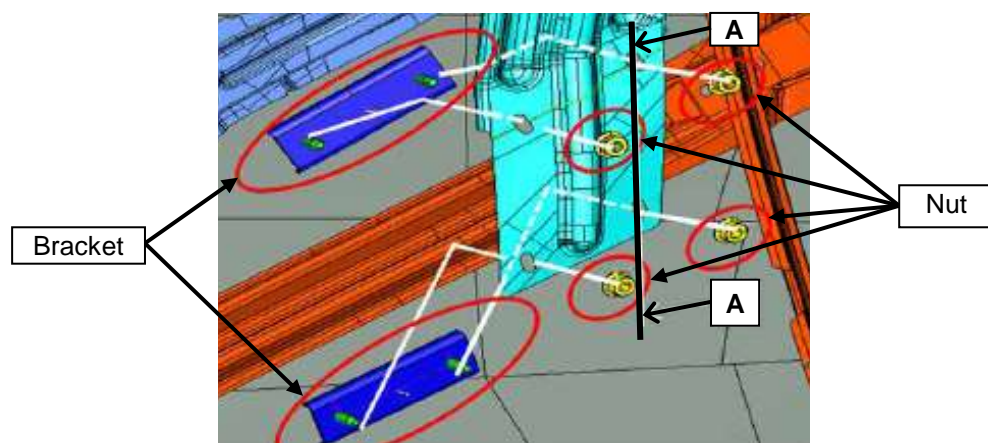
- (1) While holding the power outer mirror, place the reinforcement either by passing three stud bolts of the power outer mirror through the holes in the reinforcement and tighten with three nuts or by aligning three tap holes of the power outer mirror with the holes in the reinforcement and tighten with three bolts (depending on mirror design).

**Note:** Tightening torque  $15 \pm 1 \text{ N}\cdot\text{m}$



- (2) Place the two brackets (upper and lower) in the back of the reinforcement and pass the stud bolts through the holes in the reinforcement.

**Note:** Pinch the flange of side impact bar-lower with the bracket and the reinforcement.

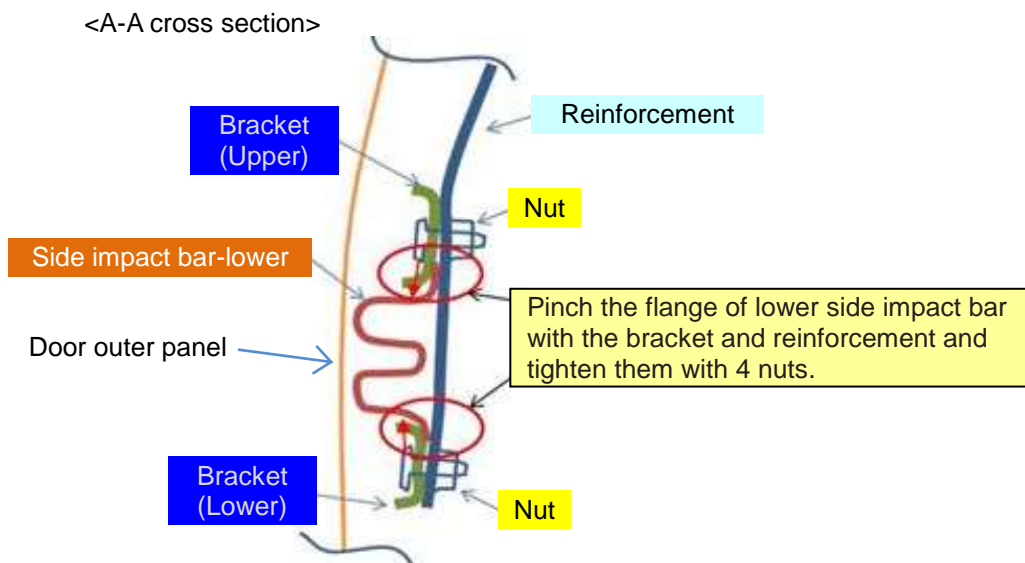


- (3) Tighten with 4 nuts to fix the reinforcement onto the side impact bar-lower.

**Note:** Tighten the brackets so that the lower side impact bar is pushed toward the direction of the arrow in the figure.

Ensure that each part does not touch metal to metal face, or it will cause rust occurrence.

Tightening torque of nut  $20 \pm 1 \text{ N}\cdot\text{m}$



4. Install other removed parts in the reverse order of removal.

C: Replace the outer mirror garnish (upper & lower) with a modified one.

Replace the outer mirror garnish (upper) with a modified one according to the Workshop Manual "OUTER MIRROR GARNISH REMOVAL/INSTALLATION".

Replace the outer mirror garnish (lower) with a modified one according to the procedure below.

#### Removal

**Note:** A sample power outer mirror is used for picture explanation. (Some small parts are missing.)

1. From the outside of the power outer mirror, remove the tab shown in figure using a tape-wrapped flathead screwdriver.



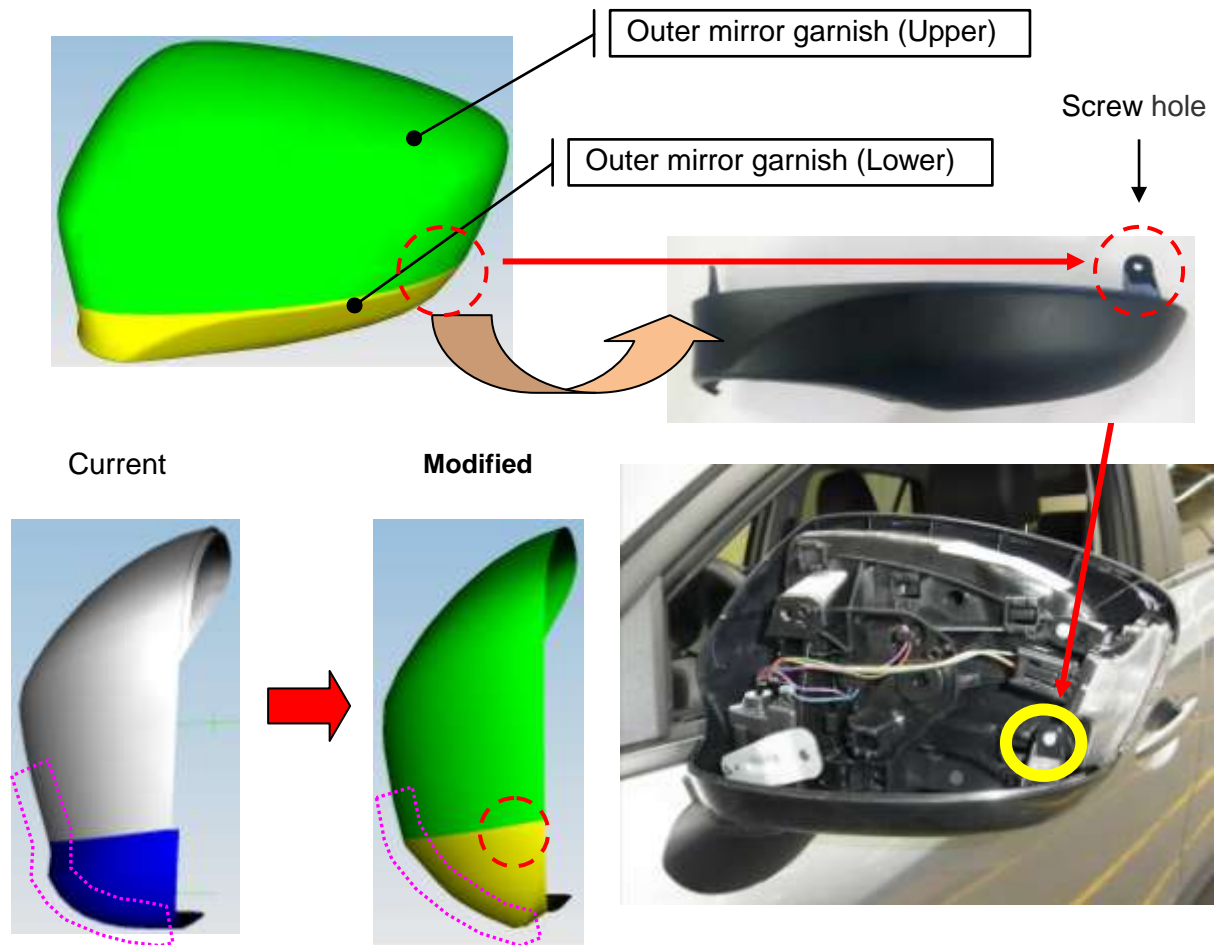
2. From the inside of the power outer mirror, remove the two tabs shown in figure using a tape-wrapped flathead screwdriver.



3. Pull to remove the outer mirror garnish (lower).

### Installation

When installing a new outer mirror garnish (lower), remove the lower screw from the side turn signal and fix it back together with the garnish.



**Note:** The modified outer mirror garnish is provided without paint and consists of two parts (upper and lower).



## Parts Information

Part Number	Part Name		Q'ty	Remark
KDY0 69 1N1	Outer mirror garnish	(RH)	1	Without paint
KDY0 69 1N7		(LH)	1	Without paint
KDY0 58 050	Outer mirror reinforcement	(RH)	1	This includes parts of the below pictures (a)-(c).
KDY0 59 050		(LH)	1	This includes parts of the below pictures (a)-(c).
KDY0 69 1A2	Base cover set	(RH)	1	Manual folding type for LHD
KDY0 69 1A8	Base cover set	(LH)	1	
KDY1 69 1A2	Base cover set	(RH)	1	Power folding type for LHD
KDY1 69 1A8	Base cover set	(LH)	1	
KDY2 69 1A2	Base cover set	(RH)	1	Manual folding type for RHD
KDY2 69 1A8	Base cover set	(LH)	1	
KDY3 69 1A2	Base cover set	(RH)	1	Power folding type for RHD
KDY3 69 1A8	Base cover set	(LH)	1	

### Outer Mirror Reinforcement



(a) Bracket (Q'ty:2)



(c) Nut (Q'ty:4)



(b) Pad (Q'ty:2)



# WARRANTY INFORMATION

Assembly group	S – Body
Subassembly group	18 – MIRRORS & VISORS
Symptom Code	83
Damage Code	9W
Causal Part No.	KDY0 69 1N7 (Outer mirror garnish)
Q'ty	1
Operation No. & Labor Hours	<p>Select the appropriate warranty information from the below for the repair and painting, and submit them in one claim</p> <p>◆ For Repair</p> <p>Select one operation depending on the vehicle and repair type.</p> <p><b>Case 1: (JMZKE***** 100001-131395)</b> Operation includes:</p> <ul style="list-style-type: none"> <li>· Replacement of Outer Mirror Garnish (both sides),</li> <li>· Installation of Outer Mirror Reinforcement (both sides)</li> <li>· Replacement of Base Cover Set (both sides)</li> </ul> <p>XXJ81XRX &amp; 1.7H</p> <p><b>Case 2: (JMZKE***** 131396-147465)</b> Operation includes:</p> <ul style="list-style-type: none"> <li>· Replacement of Outer Mirror Garnish (both sides),</li> <li>· Installation of Outer Mirror Reinforcement (both sides)</li> </ul> <p>XXJ83XRX &amp; 1.5H (With i-stop) XXJ84XRX &amp; 1.4H (Without i-stop)</p> <p><b>Case 3: (JMZKE***** 147466-999999)</b> Operation:</p> <ul style="list-style-type: none"> <li>· Replacement of Outer Mirror Garnish (both sides),</li> </ul> <p>XXJ85XRX &amp; 0.4H (With i-stop) XXJ86XRX &amp; 0.3H (Without i-stop)</p> <p>◆ For painting of outer mirror garnish (both sides)</p> <p>Select one of the following.</p> <p><b>Painting performed at Dealer paint shop:</b></p> <p>XXJ7TXRX &amp; 2.0H (For Solid Color) XXJ7UXRX &amp; 3.7H (For Metallic or Mica Color)</p> <p><b>Painting performed by sublet:</b></p> <ul style="list-style-type: none"> <li>· Submit the actual sublet expense using the sublet code A1.</li> <li>· Maximum allowable sublet amount is within the above labor hours value (2.0 or 3.7Hrs).</li> </ul>
Period Covered	Normal warranty period

Ryu Shimizugawa  
Manager, Technical Information Gr.  
Technical Service Dept.  
Mazda Motor Corporation  
2C71145435 (MC Internal Use)