

Service Information

Mazda Motor Corporation

3-1, Shinchi, Fuchu-cho, Aki-gun
Hiroshima 730-8670, Japan
TEL : 81(82)287-5323
FAX : 81(82)287-5220



| | | | |
|---|------------------|---|----------------|
| Category P | Technical | Ref. No. E005/18A | Page 1 of 2 |
| Coverage <input type="checkbox"/> Distributor only <input checked="" type="checkbox"/> Please inform your dealers | | Date Issued March 16, 2018 | |
| Please convey this information to your <input type="checkbox"/> Director <input checked="" type="checkbox"/> General Manager <input checked="" type="checkbox"/> Warranty Dept. <input checked="" type="checkbox"/> Parts Dept. <input checked="" type="checkbox"/> Training Dept. <input checked="" type="checkbox"/> Field Rep. | | Date Revised September 6, 2018 | |
| Applicable Model CX-5 (KE/KF) and CX-9 (TC) with Electric Parking Brake | | Applicable Countries and/or Vehicle Specifications Worldwide | |

Subject: Caution when performing Electric Parking Brake (EPB) Forced Release

DESCRIPTION

This Service Information is being issued to advise about the following service caution when performing the EPB forced release procedure. Performing it incorrectly causes damage to the EPB system.

NOTE: Performing the electric parking brake forced release becomes necessary if the electric parking brake cannot be released by operating the electric parking brake switch or performing a recovery operation (*) due to a malfunction in the system or a discharged battery.

* Recovery operation:

- 1) Turn ignition switch off.
- 2) Turn ignition switch on (Run engine).
- 3) Press EPB switch

EPB FORCED RELEASE SERVICE CAUTION

DO NOT release the spindle too much.

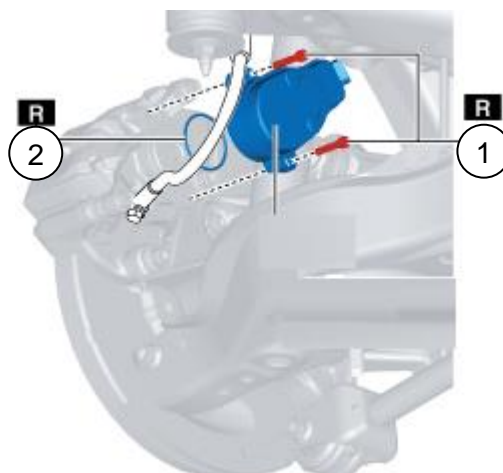
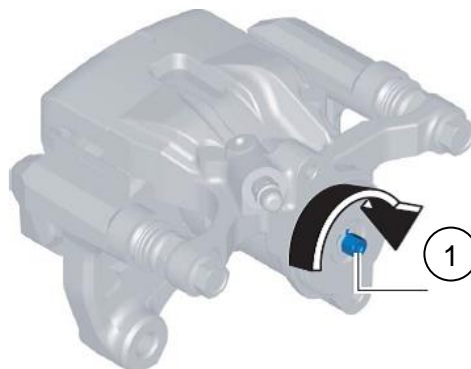
Rotate the spindle (1) only **one (1) turn** in the direction of the arrow shown in the figure.

If the spindle is released too much beyond one (1) turn, replace the brake caliper with a new one since the brake caliper may be damaged.

Although the Workshop Manual "ELECTRIC PARKING BRAKE FORCED RELEASE PROCEDURE" instructs to rotate the spindle approx. 2-3 times, this is wrong information and it will be corrected soon.

DO NOT reuse parts marked [R]

Replace two bolts (1) and O-ring (2) with new ones when reinstalling the EPB Motor Gear Unit.



TIPS BEFORE FORCED RELEASE ATTEMPT

CHECK the Battery Voltage

EPB does not work if battery voltage is insufficient.

Check the EPB operation when the engine is running or after battery has been fully charged.

If proper functioning of the EPB is confirmed, check if any DTC are stored in memory and proceed as necessary.

Additionally repair any cause of discharged battery.

Kimiaki Inooka
Manager, Technical Information Group
Technical Service Department
Mazda Motor Corporation
2H82533317 (MC Internal Use)