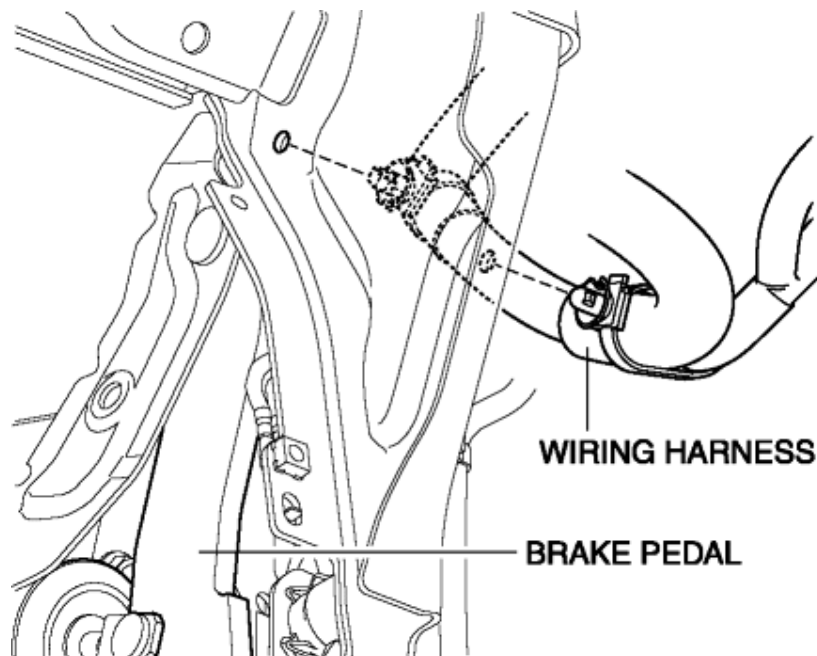


2012 - Mazda5 - Brakes

BRAKE PEDAL REMOVAL/INSTALLATION

CAUTION:

- The clearance between the brake switch and the brake pedal is automatically adjusted to the correct amount when the brake switch is inserted into the installation hole on the brake pedal and rotated to fix in place. If the brake switch is not properly installed, the clearance may be incorrect, causing a brake light malfunction. Therefore, always verify that the brake pedal is properly installed and fully released before installing the brake switch to the pedal.
 - Once the brake switch clearance has automatically been adjusted, it cannot be adjusted again. Therefore, replace the switch with a new one when replacing the power brake unit or the pedal, or performing any procedure that changes the pedal stroke.
 - Secure the steering wheel using tape or a cable to prevent the steering shaft from rotating after disconnecting the steering shaft. If the steering wheel rotates after the steering shaft and the steering gear and linkage are disconnected, the internal parts of the clock spring could be damaged.
1. Remove the battery and battery tray. (See [BATTERY REMOVAL/INSTALLATION \[MZR 2.5\]](#).)
 2. Remove the lower panel. (See [LOWER PANEL REMOVAL/INSTALLATION](#).)
 3. Remove the front heat duct (LH). (See [FRONT HEAT DUCT REMOVAL/INSTALLATION](#).)
 4. Remove the wiring harness.

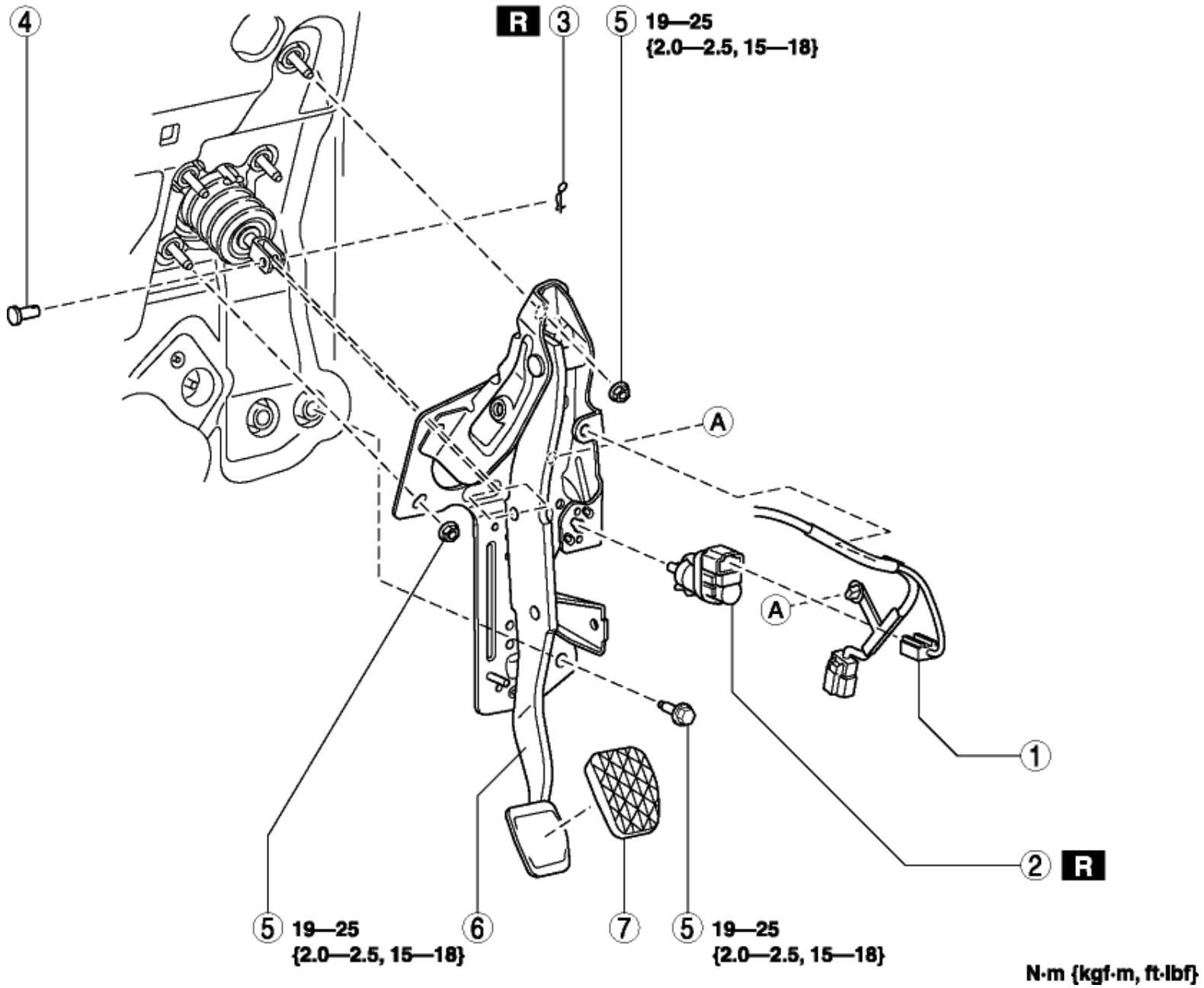


5. Remove the accelerator pedal. (See [ACCELERATOR PEDAL REMOVAL/INSTALLATION \[MZR 2.5\]](#).)
6. Remove the joint cover. (See [STEERING WHEEL AND COLUMN REMOVAL/INSTALLATION](#).)

7. Disconnect the steering shaft from the steering gear and linkage. (See [STEERING WHEEL AND COLUMN REMOVAL/INSTALLATION.](#))

8. Remove in the order indicated in the table.

9. Install in the reverse order of removal.



1	Brake switch connector
2	Brake switch (See Brake Switch Installation Note.)
3	Spring pin

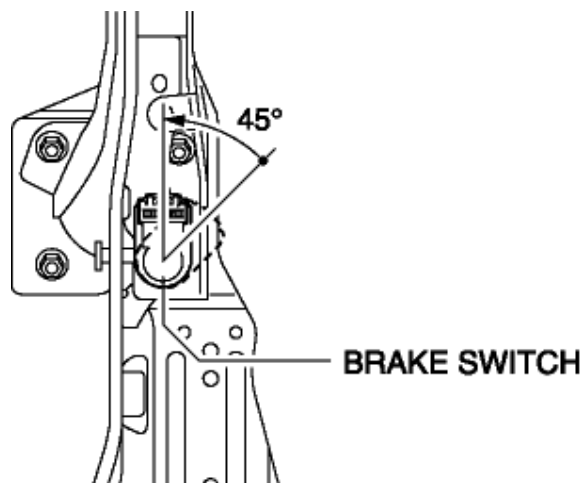
4	Clevis pin
5	Nut, bolt
6	Brake pedal (See Brake Pedal Removal Note.)
7	Pedal pad

Brake Pedal Removal Note

1. Move the power brake unit to the vehicle front where the power brake unit fork does not interfere with the brake pedal arm.
2. Remove the brake pedal.

Brake Switch Installation Note

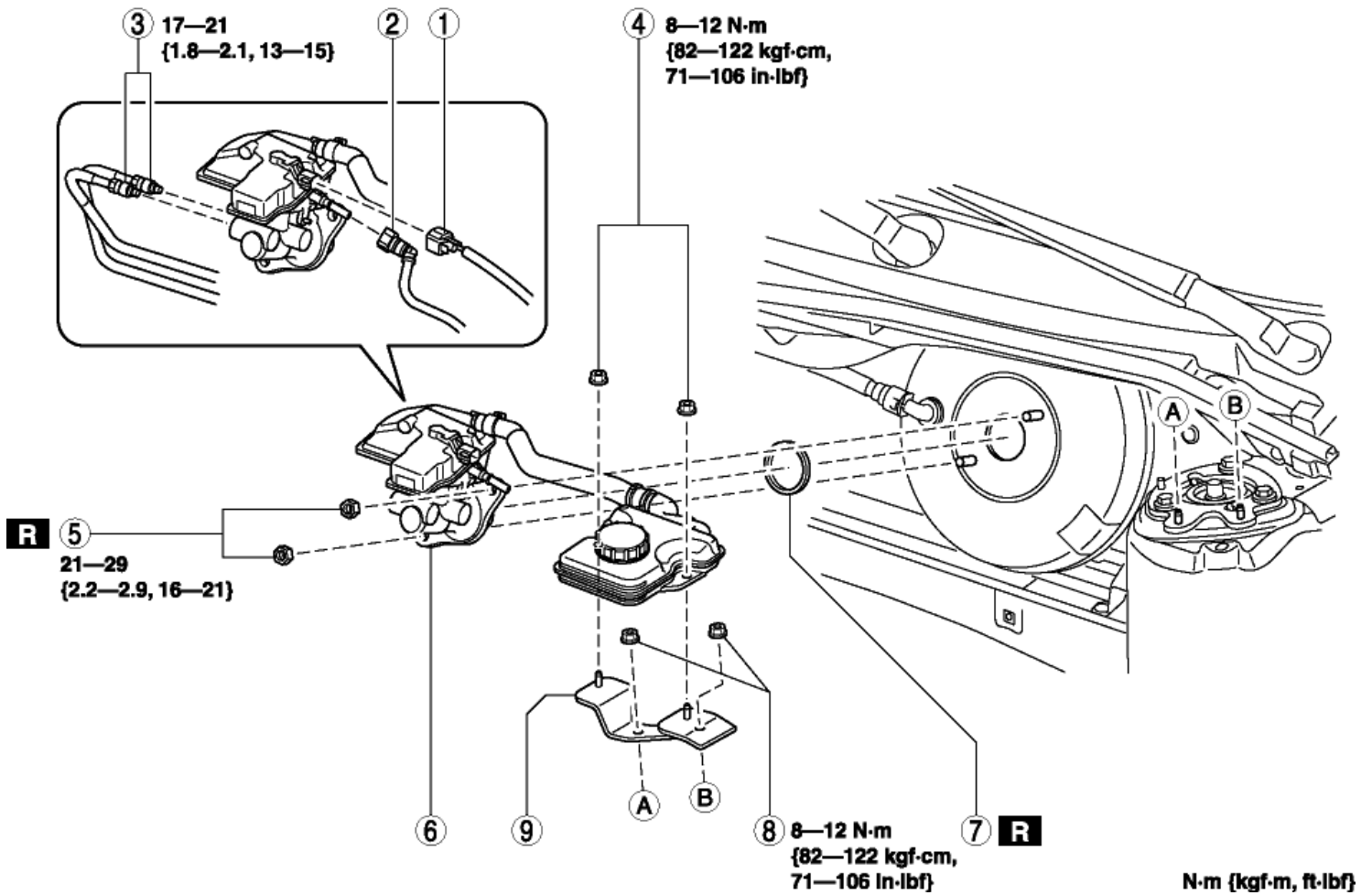
1. Inspect the brake pedal. (See [BRAKE PEDAL INSPECTION.](#))
2. With the brake pedal fully released, insert a new brake switch into the installation hole on the brake pedal.
3. Secure the brake switch by turning it counterclockwise **45°**.



2012 - Mazda5 - Brakes

MASTER CYLINDER REMOVAL/INSTALLATION

1. Remove the battery and battery tray. (See [BATTERY REMOVAL/INSTALLATION \[MZR 2.5\]](#).)
2. Remove in the order indicated in the table.
3. Install in the reverse order of removal.
4. Add brake fluid, bleed the brakes, and inspect for leakage after the installation has been completed. (See [BRAKE FLUID AIR BLEEDING](#).)



1	Brake fluid level sensor connector
2	Reserve hose (MTX) (See Reserve Hose (MTX) Removal Note .) (See Reserve Hose (MTX) Installation Note .)
3	Brake pipe