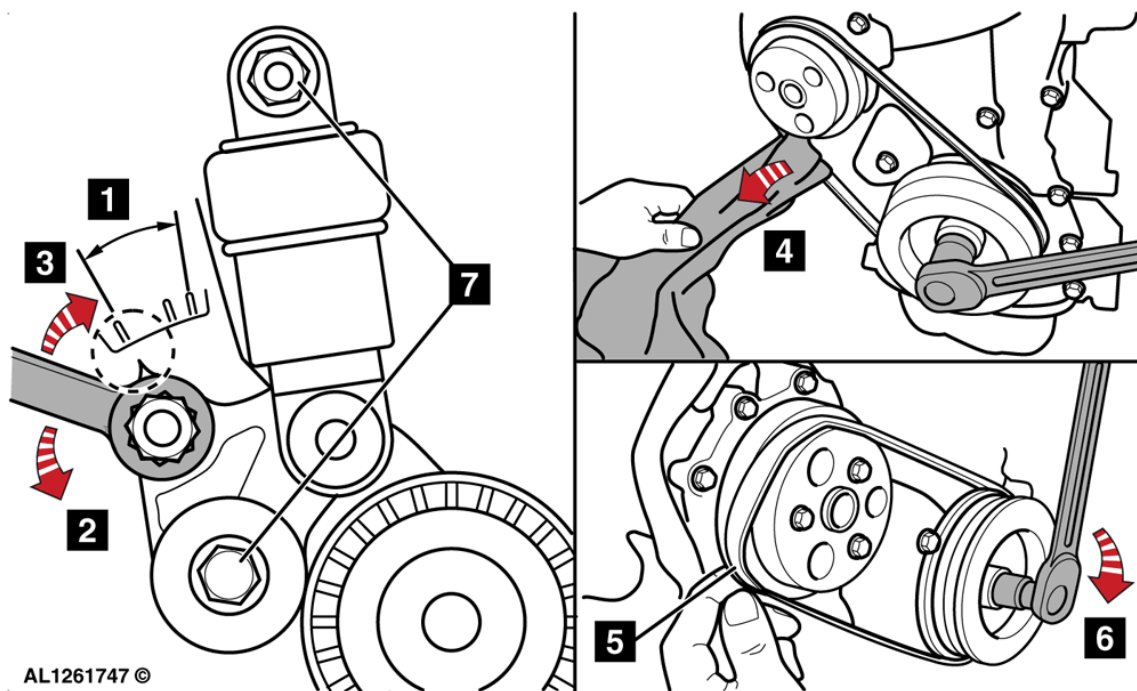


# Auxiliary drive belt

Mazda CX-5

SKYACTIV-G 2,5/2.5 (KF) (17-)



## General precautions

- Disconnect battery earth lead.
- Turn engine via crankshaft pulley (unless otherwise stated).
- Turn engine in normal direction of rotation (unless otherwise stated).
- Observe all tightening torques (where quoted).

## Special tools

- None required

## Preparatory operations

- Access auxiliary drive belt from engine bay, RH wheel arch and underneath the vehicle.
- Components to be removed include:
  - Engine cover.
  - RH wheel arch splash guard.

## Outer auxiliary drive belt

---

### Removal

**Note: Auxiliary drive belt must be renewed if wear indicator outside tolerance range 1.**

- Turn tensioner slowly anti-clockwise to release tension on belt 2.
- Remove outer auxiliary drive belt.

### Installation

- Turn tensioner slowly fully anti-clockwise 2.
- Fit outer auxiliary drive belt.
- Allow tensioner to operate 3.
- Install components in reverse order of removal.

## Inner auxiliary drive belt

---

### Removal

- Remove outer auxiliary drive belt.
- Using a clean cloth, pull down and outwards on inner auxiliary drive belt while turning engine in a clockwise direction 4.

**Note: Auxiliary drive belt can be removed by cutting if not being reused.**

### Installation

- Place inner auxiliary drive belt on crankshaft pulley and bottom of engine coolant pump pulley 5.
- Turn crankshaft pulley clockwise until belt is correctly located on both pulleys 6.
- Fit outer auxiliary drive belt.
- Install components in reverse order of removal.

## Outer auxiliary drive belt tensioner

---

### Removal

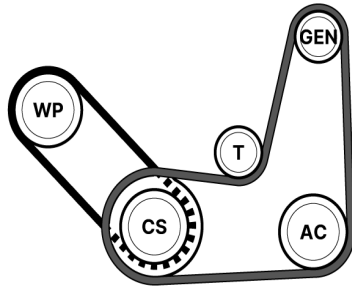
- Remove outer auxiliary drive belt.
- Remove tensioner nut and bolt 7.
- Remove tensioner.

### Installation

- Fit tensioner.
- Fit tensioner nut and bolt 7. Tightening torque: 22 - 30 Nm.
- If renewing auxiliary drive belt tensioner: Operate tensioner over complete travel range 3 times to prime.
- Fit outer auxiliary drive belt.
- Install components in reverse order of removal.

## Auxiliary drive belt routing

---



A5132312 ©