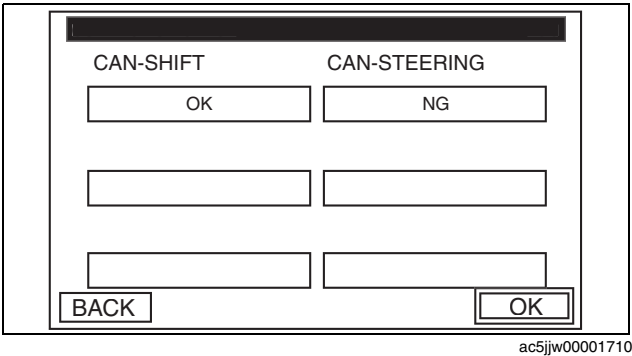




ENTERTAINMENT

3. Verify the input signal status displayed on the screen.



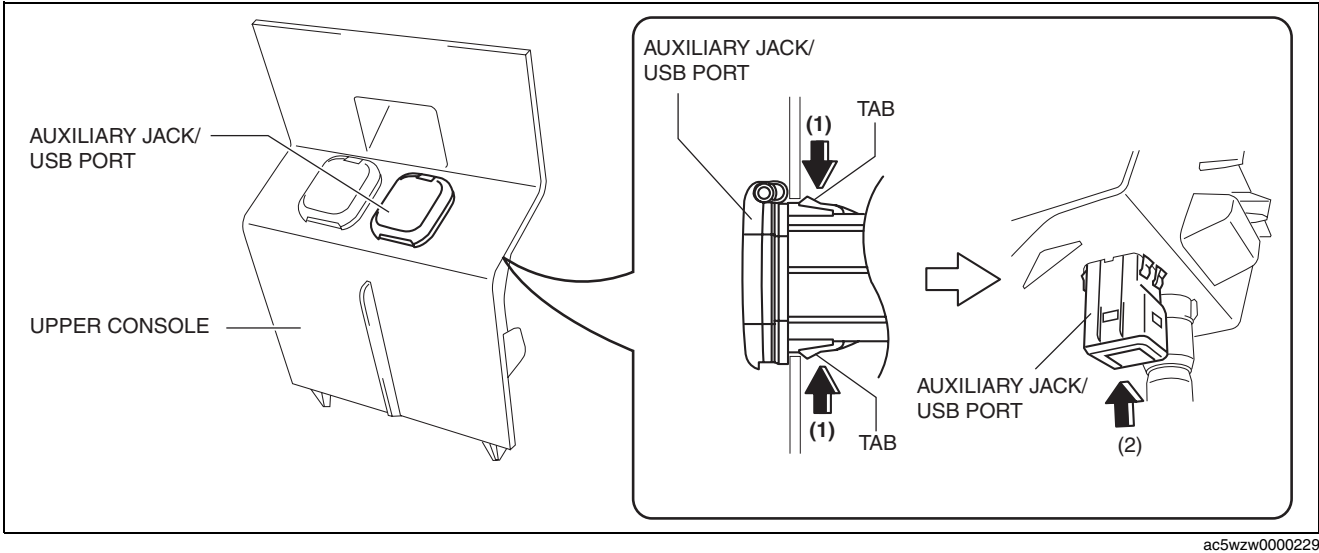
Item	OPERATION
CAN shift signal	The signal connection verification is performed automatically.
CAN Steering angle	The signal connection verification is performed automatically.

- Items displaying OK: Signal input normal
- Items not displaying OK: Verify connection status of vehicle wiring harnesses, parts and the CAN signal communication status.

AUXILIARY JACK/USB PORT REMOVAL/INSTALLATION

id092000811500

1. Disconnect the negative battery cable. (See 01-17A-11 NEGATIVE BATTERY CABLE DISCONNECTION/ CONNECTION [SKYACTIV-G 2.0].) (See 01-17A-13 NEGATIVE BATTERY CABLE DISCONNECTION/ CONNECTION [SKYACTIV-G 2.0 (WITHOUT i-stop)].) (See 01-17B-9 NEGATIVE BATTERY CABLE DISCONNECTION/CONNECTION [SKYACTIV-D 2.2].)
2. Remove the upper console. (See 09-17-47 REAR CONSOLE DISASSEMBLY/ASSEMBLY.)
3. While pressing the auxiliary jack/USB port tabs in the direction of the arrows (1) shown in the figure, press the auxiliary jack/USB port in the direction of the arrow (2) to detach the auxiliary jack/USB port tabs from the upper console.



4. Remove the auxiliary jack/USB port.
5. Install in the reverse order of removal.

AUXILIARY JACK/USB PORT INSPECTION

id092000811600

Auxiliary jack inspection

1. Disconnect the negative battery cable. (See 01-17A-11 NEGATIVE BATTERY CABLE DISCONNECTION/ CONNECTION [SKYACTIV-G 2.0].) (See 01-17A-13 NEGATIVE BATTERY CABLE DISCONNECTION/ CONNECTION [SKYACTIV-G 2.0 (WITHOUT i-stop)].) (See 01-17B-9 NEGATIVE BATTERY CABLE DISCONNECTION/CONNECTION [SKYACTIV-D 2.2].)
2. Remove the following parts:
 - (1) Upper console (See 09-17-47 REAR CONSOLE DISASSEMBLY/ASSEMBLY.)
 - (2) Auxiliary jack/USB port (See 09-20-77 AUXILIARY JACK/USB PORT REMOVAL/INSTALLATION.)

