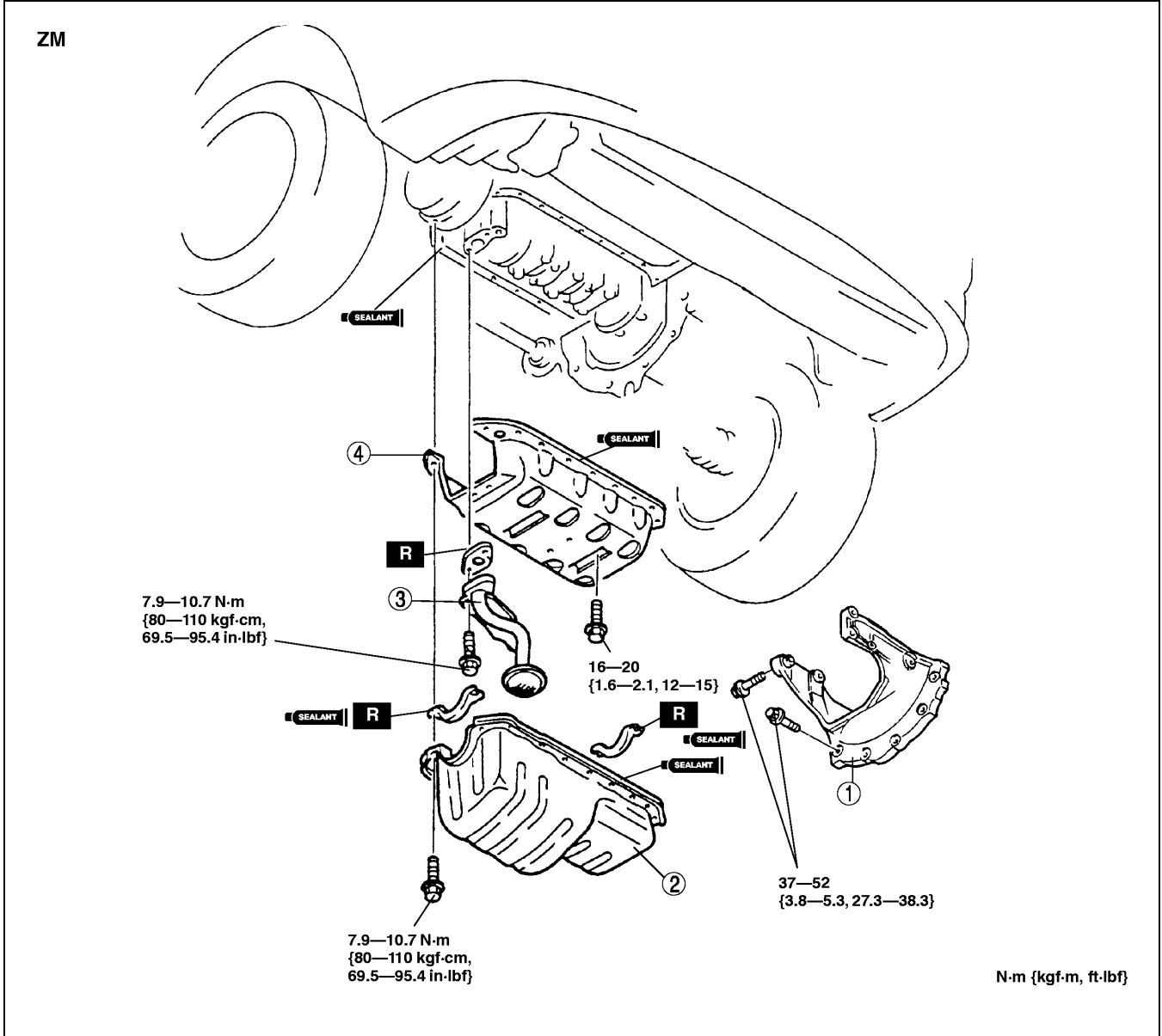


LUBRICATION

OIL PAN REMOVAL/INSTALLATION

A3U011110040W01

1. Disconnect the negative battery cable.
2. Drain the engine oil. (See 01-11-3 ENGINE OIL REPLACEMENT.)
3. Remove the front pipe.
4. Remove in the order indicated in the table.
5. Install in the reverse order of removal.
6. Start the engine and inspect for engine oil leakage.



X3U111WA6

1	Integrated stiffener (See 01-11-8 Integrated Stiffener Installation Note)
2	Oil pan (See 01-11-5 Oil Pan Removal Note) (See 01-11-7 Oil Pan Installation Note)

3	Oil strainer
4	MBSP (Main bearing support plate) (See 01-11-6 MBSP (Main bearing support plate) Removal Note) (See 01-11-6 MBSP (Main bearing support plate) Installation Note)