

<b>Subject:</b> <b>ENGINE STUMBLE WHILE DRIVING WITH LIGHT ACCELERATION AT 1500-2500 RPM</b>	<b>Bulletin No:</b> 01-008/08
	<b>Last Issued:</b> 02/13/2008

## APPLICABLE MODEL(S)/VINS

2006-2007 Mazda5 vehicles

## DESCRIPTION

Some vehicles may experience an intermittent engine stumble while driving with light acceleration at 1500-2500 rpm. This is caused by the camshaft position sensor picking up noise from the nearby ignition coil harness, which the PCM detects as an abnormal signal. To eliminate this concern, the PCM software has been changed.

Customers having this concern should have their vehicle repaired using the following repair procedure.

## REPAIR PROCEDURE

1. Reboot the IDS to clear memory before reprogramming.
2. Using IDS 52.13 or later software, reprogram the PCM to the latest calibration (refer to "Calibration Information" table) by following the "Module Reprogramming" procedure.

### NOTE:

- Always update the IDS tool first, then follow on-screen instructions to download the needed calibration file for PCM reprogramming.
- It is not necessary to remove any fuses or relays during PCM reprogramming when the IDS screen prompts you to do so. You may accidentally stop power to one of the PCM terminals and cause the PCM to be blanked, or you may receive error messages during the IDS reprogramming procedure.
- IDS shows the calibration part numbers after programming the PCM.
- Please be aware that PCM calibration part numbers and file names listed in any Service Bulletin may change due to future releases of IDS software, and additional revisions made to those calibrations for service related concerns.
- When reprogramming a PCM, IDS will always display the "latest" calibration P/N available for that vehicle. If any calibration has been revised/updated to contain new information for a new service concern/issue, it will also contain all previously released calibrations.
- **When performing this procedure, we recommend that a battery charger be installed on the vehicle battery and turned ON to a maximum charge of no more than 20 AMPS to keep the vehicle battery up to capacity. If you exceed 20 AMPS, it could damage the VCM.**

3. After performing the PCM reprogramming procedure, verify the repair by starting the engine and making sure there are no MIL illumination or abnormal warning lights present.

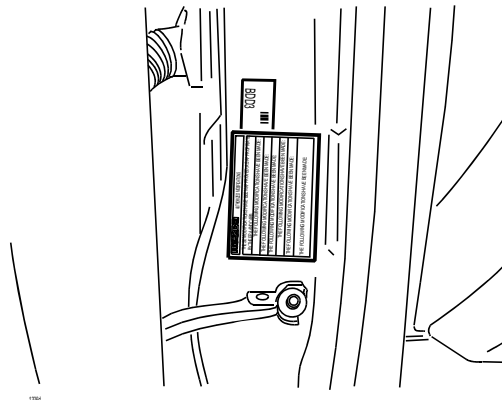
**NOTE:**

- If any DTCs should remain after performing DTC erase, diagnose the DTCs according to the appropriate Troubleshooting section of the Workshop Manual.
  - After PCM reprogramming, it is no longer necessary to road test the vehicle to “relearn” KAM (Keep Alive Memory).
4. Fill out an “Authorized Modifications” label (P/N 9999-95-AMDC-97) with the new PCM calibration information, your dealer code, and today’s date.

<b>mazda</b>	<b>AUTHORIZED MODIFICATIONS</b>
THESE MODIFICATIONS HAVE BEEN APPROVED, AS APPROPRIATE, BY THE EPA AND CARB.	
THE FOLLOWING MODIFICATIONS HAVE BEEN MADE:	
<div style="border: 1px dashed black; height: 100px;"></div>	

1326c

5. Place the “Authorized Modifications” label on the “A” pillar below the tear tag in the driver door jamb.



## CALIBRATION INFORMATION

Spec	Trans	New PCM Calibration Part Number	File Name
Fed	M/T	L3P5-18-881N	SW-L3P5EN000
	A/T	L3P6-18-881P	SW-L3P6EP000
CA	M/T	L3P7-18-881N	SW-L3P7EN000
	A/T	L3P8-18-881P	SW-L3P8EP000
Mexico	M/T	L35A-18-881H	SW-L35AEH000
	A/T	L35B-18-881H	SW-L35BEH000

## WARRANTY INFORMATION

**NOTE:**

- This warranty information applies only to verified customer complaints on vehicles eligible for warranty repair. Refer to the Warranty Wizard for warranty term information.
- Additional diagnostic time cannot be claimed for this repair.

Warranty Type	A
Symptom Code	08
Damage Code	9W
Part Number Main Cause	5555-08-006A
Quantity	0
Operation Number / Labor Hours	XXD05XFX / 0.3 Hrs.