

<b>Subject:</b>  MIL TURNS ON WITH DTC P0401 (EGR FLOW INSUFFICIENT)	<b>Bulletin No:</b> 01-004/08
	<b>Last Issued:</b> 02/20/2008

## BULLETIN NOTE

This bulletin supersedes the previous bulletin issued on 02/07/08. The WARRANTY INFORMATION has been revised.

## APPLICABLE MODEL(S)/VINS

2007-2008 Mazda3 vehicles (except CA 2.0/2.3L) with VINs lower than JM1BK\*\*\*\* \*\* 861723 (produced before November 27, 2007)

2008 Mazda5 vehicles with VINs lower than JM1CR\*\*\*\* \*\* 303918 (produced before November 12, 2007)

2008 Mazda6 vehicles (2.3L except CA A/T) produced before December 3, 2007

## DESCRIPTION

Some vehicles may experience an MIL turning ON with DTC P0401 (EGR flow insufficient) without any problems on a related part. This is due to inadequate PCM calibration.

To fix the problem, the PCM software has been changed. Customers having this concern should have their vehicle repaired using the following repair procedure.

## REPAIR PROCEDURE

1. Reboot the IDS to clear memory before reprogramming.
2. Using IDS 52.3 or later software, reprogram the PCM to the latest calibration (refer to "Calibration Information" table) by following the "Module Reprogramming" procedure.

### NOTE:

- Always update the IDS tool first, then follow on-screen instructions to download the needed calibration file for PCM reprogramming.
- It is not necessary to remove any fuses or relays during PCM reprogramming when the IDS screen prompts you to do so. You may accidentally stop power to one of the PCM terminals and cause the PCM to be blanked, or you may receive error messages during the IDS reprogramming procedure.
- IDS shows the calibration part numbers after programming the PCM.
- Please be aware that PCM calibration part numbers and file names listed in any Service Bulletin may change due to future releases of IDS software, and additional revisions made to those calibrations for service related concerns.

- When reprogramming a PCM, IDS will always display the “latest” calibration P/N available for that vehicle. If any calibration has been revised/updated to contain new information for a new service concern/issue, it will also contain all previously released calibrations.
  - **When performing this procedure, we recommend that a battery charger be installed on the vehicle battery and turned ON to a maximum charge of no more than 20 AMPS to keep the vehicle battery up to capacity. If you exceed 20 AMPS, it could damage the VCM.**
3. After performing the PCM reprogramming procedure, verify the repair by starting the engine and making sure there are no MIL illumination or abnormal warning lights present.

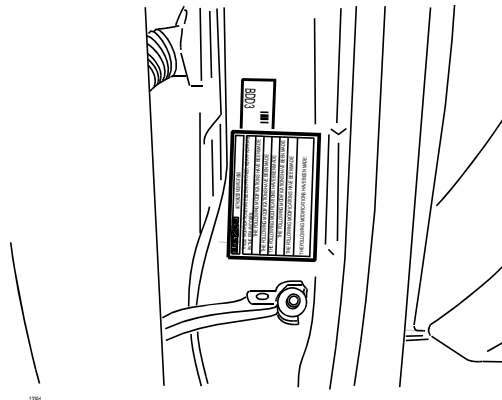
**NOTE:**

- If any DTCs should remain after performing DTC erase, diagnose the DTCs according to the appropriate Troubleshooting section of the Workshop Manual.
  - After PCM reprogramming, it is no longer necessary to road test the vehicle to “relearn” KAM (Keep Alive Memory).
4. Fill out an “Authorized Modifications” label (P/N 9999-95-AMDC-97) with the new PCM calibration information, your dealer code, and today’s date.

<b>mazda</b>	<b>AUTHORIZED MODIFICATIONS</b>
THESE MODIFICATIONS HAVE BEEN APPROVED, AS APPROPRIATE, BY THE EPA AND CARB.	
THE FOLLOWING MODIFICATIONS HAVE BEEN MADE:	
<div style="border: 1px dashed black; height: 100px;"></div>	

1326c

5. Place the “Authorized Modifications” label on the “A” pillar below the tear tag in the driver door jamb.



1326b

## CALIBRATION INFORMATION

### 2007 Mazda3 2.3L (L3)

Spec	Trans	New PCM Calibration Part Number	File Name	Note
Fed/Can	MT	L34S-18-881E	SW-L39SEE000	
Fed/Can	AT	L34T-18-881E	SW-L39TEE000	
Mexico	MT	LKYN-18-881A	SW-LKYNEA000	*1
Mexico	MT	L38L-18-881F	SW-L38LEF000	*2
Mexico	AT	LKYP-18-881A	SW-LKYPEA000	*1
Mexico	AT	L38M-18-881F	SW-L38MEF000	*2

### 2007 Mazda3 2.0L (LF)

Spec	Trans	New PCM Calibration Part Number	File Name	Note
Fed/Can	MT	LFS6-18-881F	SW-LFS6EF000	
Fed/Can	AT	LFS7-18-881G	SW-LFS7EG000	
Mexico	MT	LFZN-18-881A	SW-LFZNEA000	*1
Mexico	MT	LF4G-18-881G	SW-LF4GEG000	*2
Mexico	AT	LFZP-18-881B	SW-LFZPEB000	*1
Mexico	AT	LF4H-18-881H	SW-LF4HEH000	*2

\*1: for BP9R 61 K00\* A/C compressor

\*2: for CC43 61 K00\* A/C compressor

### 2008 Mazda3 2.3L (L3)

Spec	Trans	New PCM Calibration Part Number	File Name
Fed/Can	MT	L3AR-18-881C	SW-L3AREC000
Fed/Can	AT	L34S-18-881C	SW-L3ASEC000
Mexico	MT	L3AT-18-881C	SW-L3ATEC000
Mexico	AT	L3AV-18-881C	SW-L3AVEC000

2008 Mazda3 2.0L (LF)

Spec	Trans	New PCM Calibration Part Number	File Name
Fed/Can	MT	LF7V-18-881C	SW-LF7VEC000
Fed/Can	AT	LF7W-18-881C	SW-LF7WEC000
Mexico	MT	LF7X-18-881C	SW-LF7XEC000
Mexico	AT	LF8A-18-881C	SW-LF8AEC000

2008 Mazda5

Spec	Trans	New PCM Calibration Part Number	File Name
Fed	MT	L39B-18-881D	SW-L39BED000
Fed	AT	L39C-18-881D	SW-L39CED000
CA	MT	L39D-18-881D	SW-L39DED000
CA	AT	L39E-18-881D	SW-L39EED000
Mexico	MT	L39F-18-881D	SW-L39FED000
Mexico	AT	L39G-18-881D	SW-L39GED000

2008 Mazda6 2.3L (L3)

Spec	Trans	New PCM Calibration Part Number	File Name
Fed	MT	L39V-18-881F	SW-L39VEF000
Fed	AT	L39W-18-881F	SW-L39WEF000
CA	MT	L39X-18-881F	SW-L39XEF000
Mexico	MT	L3AB-18-881F	SW-L3ABEF000
Mexico	AT	L3AC-18-881F	SW-L3ACEF000

**NOTE:** The PCM Calibration Part Numbers listed above are provided for PCM reprogramming purposes only. These are not necessarily the same Mazda part numbers used to order an actual PCM through the Mazda Parts System. It is not necessary to order a PCM as part of this repair procedure.

## WARRANTY INFORMATION

**NOTE:**

- This warranty information applies only to verified customer complaints on vehicles eligible for warranty repair. Refer to the Warranty Wizard for warranty term information.
- Additional diagnostic time cannot be claimed for this repair.

Warranty Type	A
Symptom Code	6X
Damage Code	9W
Part Number Main Cause	5555-07-027A
Quantity	0
Operation Number / Labor Hours	XXC61XFX / 0.3 Hrs.