

<b>Subject:</b>  <b>MULTI-MODEL- ENGINE STALLS WHEN DRIVING AT LOW SPEED</b>	<b>Bulletin No:</b> 01-003/08
	<b>Last Issued:</b> 02/11/2008

## BULLETIN NOTE

This bulletin supersedes the previous bulletin issued on 02/07/08. The REPAIR PROCEDURE has been revised.

## APPLICABLE MODEL(S)/VINS

2004-2005 Mazda3 vehicles

2006-2007 Mazda5 vehicles with VINs lower than JM1CR\*\*\*\* \*\* 150779 (produced before February 1, 2007)

2005 Mazda6 vehicles with 3.0L

2006-2007 Mazda6 vehicles with 2.3L (except Mazdaspeed6) produced before February 5, 2007

## DESCRIPTION

Some vehicles may experience engine stall when driving at low speed and the accelerator pedal is lightly depressed, then released. The engine can be restarted. The PCM software has been revised to eliminate this concern.

Customers having this concern should have their vehicle repaired using the following repair procedure.

## REPAIR PROCEDURE

1. Reboot the IDS to clear memory before reprogramming.
2. Using IDS 52.3 or later software, reprogram the PCM to the latest calibration (refer to "Calibration Information" table) by following the "Module Reprogramming" procedure.

### NOTE:

- Always update the IDS tool first, then follow on-screen instructions to download the needed calibration file for PCM reprogramming.
- It is not necessary to remove any fuses or relays during PCM reprogramming when the IDS screen prompts you to do so. You may accidentally stop power to one of the PCM terminals and cause the PCM to be blanked, or you may receive error messages during the IDS reprogramming procedure.
- IDS shows the calibration part numbers after programming the PCM.
- Please be aware that PCM calibration part numbers and file names listed in any Service Bulletin may change due to future releases of IDS software, and additional revisions made to those calibrations for service related concerns.
- When reprogramming a PCM, IDS will always display the "latest" calibration P/N available for that vehicle. If any calibration has been revised/updated to contain new information for a new service concern/issue, it will also contain all previously released calibrations.

- When performing this procedure, we recommend that a battery charger be installed on the vehicle battery and turned ON to a maximum charge of no more than 20 AMPS to keep the vehicle battery up to capacity. If you exceed 20 AMPS, it could damage the VCM.
3. After performing the PCM reprogramming procedure, verify the repair by starting the engine and making sure there are no MIL illumination or abnormal warning lights present.

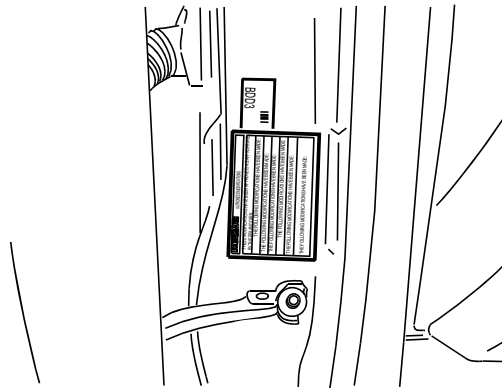
**NOTE:**

- If any DTCs should remain after performing DTC erase, diagnose the DTCs according to the appropriate Troubleshooting section of the Workshop Manual.
  - After PCM reprogramming, it is no longer necessary to road test the vehicle to “relearn” KAM (Keep Alive Memory).
4. Fill out an “Authorized Modifications” label (P/N 9999-95-AMDC-97) with the new PCM calibration information, your dealer code, and today’s date.

<b>mazda</b>	<b>AUTHORIZED MODIFICATIONS</b>
THESE MODIFICATIONS HAVE BEEN APPROVED, AS APPROPRIATE, BY THE EPA AND CARB.	
THE FOLLOWING MODIFICATIONS HAVE BEEN MADE:	
<div style="border: 1px dashed black; height: 100px;"></div>	

1326c

5. Place the “Authorized Modifications” label on the “A” pillar below the tear tag in the driver door jamb.



1326

## CALIBRATION INFORMATION

Mazda3 (47.5 or later software)

Spec	Engine	Trans	New PCM Calibration Part Number	File Name
CA	2.3L (L3)	M/T	L3S7-18-881E	SW-L3S7EE040
		A/T	L3S8-18-881F	SW-L3S8EF050
Canada	2.3L (L3)	M/T	LJZ9-18-881A	SW-LJZ9EA020
Fed	2.3L (L3)	M/T	L3S2-18-881D	SW-L3S2ED030
Canada/Fed	2.3L (L3)	A/T	L3S3-18-881E	SW-L3S3EE040
Canada	2.0L (LF)	A/T	LFZF-18-881B	SW-LFZFEB020
		M/T	LFZE-18-881A	SW-LFZEEA010
Fed	2.0L (LF)	M/T	LFG5-18-881E	SW-LFG5EE040
		A/T	LFG6-18-881F	SW-LFG6EF050

Mazda3 (50.5 or later software)

Spec	Engine	Trans	New PCM Calibration Part Number	File Name
CA	2.0L (LF)	A/T	LFH8-18-881E	SW-LFH8EE000
		M/T	LFH7-18-881D	SW-LFH7ED000

Mazda5 (47.7 or later software)

Spec	Trans	New PCM Calibration Part Number	File Name
Fed/Canada	M/T	L3P5-18-1881L	SW-L3P5EL000
	A/T	L3P6-18-1881M	SW-L3P6EM000
CA	M/T	L3P7-18-1881L	SW-L3P7EL000
	A/T	L3P8-18-1881M	SW-L3P8EM000
Mexico	M/T	L35A-18-1881F	SW-L35AEF000
	A/T	L35B-18-1881F	SW-L35BEF000

2005 Mazda6 (49.1 or later software)

Spec	Engine	Trans	New PCM Calibration Part Number	File Name
CA	3.0L (AJ)	M/T	AJB4-18-881J	SW-AJB4EJ050
		A/T*	AJB5-18-881J	SW-AJB5EJ050
Fed	3.0L (AJ)	M/T	AJB6-18-881J	SW-AJB6EJ050
		A/T*	AJB7-18-881J	SW-AJB7EJ050

**\*NOTE:** A/T\* vehicles need TCM reprogram (38.5 or later software). If TCM reprogram is not done, the problem will not improve.

Spec	Engine	Trans	New PCM Calibration Part Number	File Name
CA/Fed	3.0L (AJ)	A/T	AWY1-18-881T	SW-AWY1T0000

2006 Mazda6 (52.3 or later software)

Spec	Engine	Trans	New PCM Calibration Part Number	File Name
CA	2.3L (L3)	M/T	L3R2-18-881G	SW-L3R2EG030
		A/T	L3R3-18-881H	SW-L3R3EH040
Fed	2.3L (L3)	M/T	L3P9-18-881G	SW-L3P9EG030
		A/T	L3R1-18-881G	SW-L3R1EG030
Canada	2.3L (L3)	M/T	LJZH-18-881B	SW-LJZHEB020
		A/T	LJZJ-18-881B	SW-LJZJEB020
Mexico	2.3L (L3)	A/T	L34X-18-881C	SW-L34XEC030

2007 Mazda6 (52.3 or later software)

Spec	Engine	Trans	New PCM Calibration Part Number	File Name
CA	2.3L (L3)	M/T	L38F-18-881C	SW-L38FEC000
		A/T	L35N-18-881D	SW-L35NED000
Fed	2.3L (L3)	M/T	L38D-18-881C	SW-L38DEC000
		A/T	L38E-18-881C	SW-L38EEC000
Canada	2.3L (L3)	M/T	LKY3-18-881C	SW-LKY3EC000
		A/T	LKY5-18-881C	SW-LKY5EC000
Mexico	2.3L (L3)	A/T	L38H-18-881C	SW-L38HEC000

**NOTE:** The PCM Calibration Part Numbers listed above are provided for PCM reprogramming purposes only. These are not necessarily the same Mazda part numbers used to order an actual PCM through the Mazda Parts System. It is not necessary to order a PCM as part of this repair procedure.

## WARRANTY INFORMATION

**NOTE:**

- This warranty information applies only to verified customer complaints on vehicles eligible for warranty repair. Refer to the Warranty Wizard for warranty term information.
- Additional diagnostic time cannot be claimed for this repair.

Warranty Type	A
Symptom Code	05
Damage Code	9W
Part Number Main Cause	5555-06-037A
Quantity	0
Operation Number / Labor Hours	XXC033FX / 0.3 Hrs.